

**Transmission of material in this release is embargoed until 8:30 a.m. (EST), Friday, January 15, 2010**

USDL-10-0012

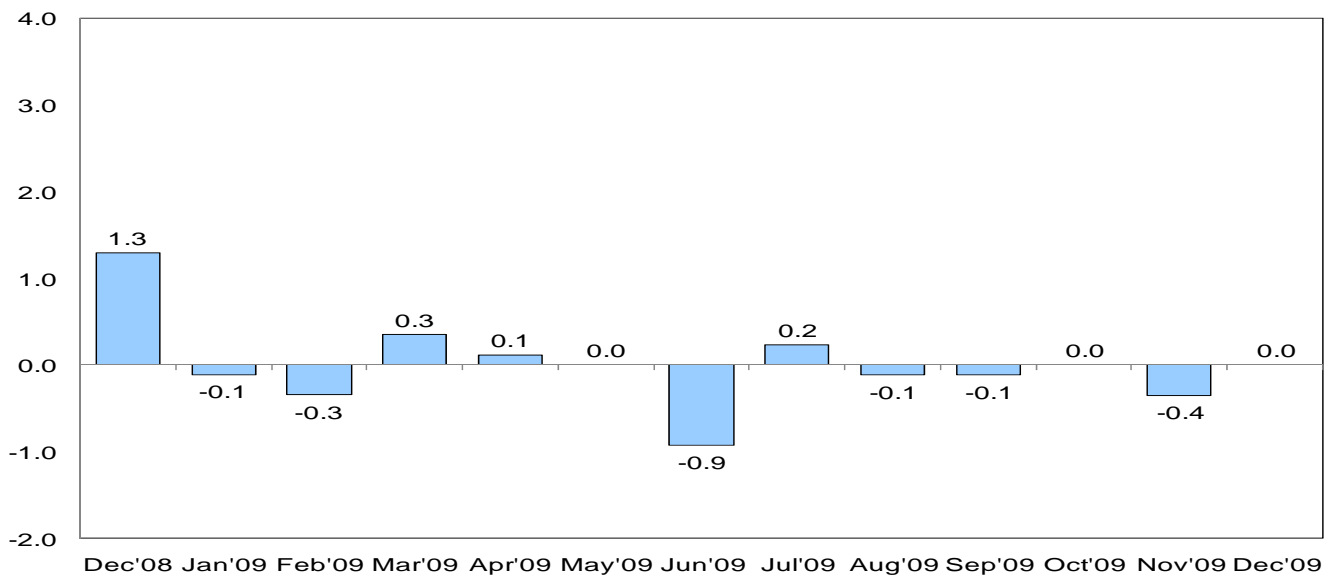
Technical Information: (202) 691-6555 • cesinfo@bls.gov • www.bls.gov/ces  
Media Contact: (202) 691-5902 • PressOffice@bls.gov

### REAL EARNINGS – DECEMBER 2009

Real average hourly earnings did not change from November to December, seasonally adjusted, the Bureau of Labor Statistics reported today. A 0.2 percent increase in average hourly earnings for production and nonsupervisory workers was offset by a 0.2 percent increase in the Consumer Price Index for Urban Wage Earners and Clerical Workers (CPI-W).

Real average weekly earnings was unchanged over the month, seasonally adjusted. This stems from no change in real average hourly earnings and in average weekly hours. Since reaching a recent high point in December 2008, real average weekly earnings have fallen by 1.6 percent.

**Chart 1: Over-the-month percentage change in real average hourly earnings, seasonally adjusted, December 2008 – December 2009**



Real average hourly earnings fell 1.3 percent, seasonally adjusted, from December 2008 to December 2009. A 0.3 percent decline in average weekly hours combined with the decrease in real average hourly earnings resulted in a 1.6 percent decrease in real average weekly earnings during this period.

**Real Earnings for January 2010 is scheduled to be released on Friday, February 19, 2010 at 8:30 a.m. (EST).**

## **Upcoming Changes to The Real Earnings News Release**

Effective with the release of January 2010 data on February 19, 2010, the U.S. Bureau of Labor Statistics will introduce changes to the Real Earnings news release text and tables in order to incorporate new all employee hours and earning data. New real earnings for all employees will be calculated using the 1982-1984 based Consumer Price Index for All Urban Consumers (CPI-U). Real Earnings for production and nonsupervisory employees will be revised to use the 1982-1984 based Consumer Prices Index for Urban Wage Earners and Clerical Workers (CPI-W). Previously, Real Earnings were calculated using an unpublished CPI-W with a base of 1982.

News release tables for Real Earnings will be redesigned to incorporate the new series and to be consistent with formatting of the new Employment Situation news release tables. Additional information is available at [www.bls.gov/ces/upcoming\\_realer\\_changes.htm](http://www.bls.gov/ces/upcoming_realer_changes.htm).

**Table A. Composition of change in real earnings of production and nonsupervisory workers<sup>1</sup> on private nonfarm payrolls**

Year and month	Average hourly earnings	Average weekly hours	Average weekly earnings	The Consumer Price Index <sup>2</sup>	Real average weekly earnings
	Percent change from preceding month, seasonally adjusted				
2008: Dec.	0.3	-0.3	( <sup>3</sup> )	-1.0	1.0
2009: Jan.	.2	.0	.2	.3	-.2
Feb.	.2	.0	.2	.4	-.3
Mar.	.2	-.6	-.4	-.1	-.2
Apr.	.0	.0	.0	.0	( <sup>3</sup> )
May	.2	.0	.2	.1	( <sup>3</sup> )
June	.1	-.3	-.2	.9	-1.2
July	.3	.3	.6	.0	.5
Aug.	.4	.0	.4	.6	-.2
Sept.	.1	.0	.1	.2	-.1
Oct.	.3	-.3	( <sup>3</sup> )	.3	-.3
Nov. <sup>P</sup>	.2	.6	.8	.5	.3
Dec. <sup>P</sup>	.2	.0	.2	.2	( <sup>3</sup> )

<sup>1</sup> See footnote 2, table 1.

<sup>2</sup> The deflator for the constant-dollar series presented in this release is the Consumer Price Index for Urban Wage

Earners and Clerical Workers (CPI-W).

<sup>3</sup> Change less than 0.05 percent in magnitude.

<sup>P</sup> = preliminary.

**Table B. Percent change in earnings from the same month a year ago for production and nonsupervisory workers<sup>1</sup> on private nonfarm payrolls, seasonally adjusted**

Year and month	Average hourly earnings		Average weekly earnings	
	Current dollars	Constant (1982) dollars <sup>2</sup>	Current dollars	Constant (1982) dollars <sup>2</sup>
2008: Dec.	3.9	4.6	2.4	3.1
2009: Jan.	3.7	4.5	2.5	3.2
Feb.	3.5	4.0	2.0	2.5
Mar.	3.4	4.3	1.2	2.2
Apr.	3.1	4.3	1.0	2.2
May	3.0	4.6	1.2	2.8
June	2.8	4.5	.9	2.7
July	2.7	5.3	1.2	3.7
Aug.	2.6	4.6	.8	2.7
Sept.	2.6	4.4	1.1	2.8
Oct.	2.5	2.9	1.0	1.4
Nov. <sup>P</sup>	2.3	.0	1.7	-.6
Dec. <sup>P</sup>	2.2	-1.3	1.9	-1.6

<sup>1</sup> See footnote 2, table 1.

<sup>2</sup> The deflator for the constant-dollar series presented in this release is the Consumer Price Index for Urban Wage

Earners and Clerical Workers (CPI-W).

<sup>3</sup> Change less than 0.05 percent in magnitude.

<sup>P</sup> = preliminary.

**Table 1. Earnings of production and nonsupervisory workers on private nonfarm payrolls in current and constant dollars<sup>1</sup> by industry and selected industry detail, not seasonally adjusted**

Industry	Average hourly earnings				Average weekly earnings			
	Dec. 2008	Nov. 2009 <sup>P</sup>	Dec. 2009 <sup>P</sup>	Percent change: Dec. 2008-Dec. 2009	Dec. 2008	Nov. 2009 <sup>P</sup>	Dec. 2009 <sup>P</sup>	Percent change: Dec. 2008-Dec. 2009
Total private: <sup>2</sup>								
Current dollars .....	\$18.40	\$18.85	\$18.82	2.3	\$610.88	\$631.48	\$622.94	2.0
Constant (1982) dollars .....	8.71	8.62	8.61	-1.1	289.02	288.63	285.13	-1.3
Goods-producing:								
Current dollars .....	19.75	20.09	20.08	1.7	778.15	801.59	797.18	2.4
Constant (1982) dollars .....	9.34	9.18	9.19	-1.6	368.15	366.38	364.88	-9
Mining and logging:								
Current dollars .....	23.53	23.12	23.52	.0	1,040.03	1,021.90	1,027.82	-1.2
Constant (1982) dollars .....	11.13	10.57	10.77	-3.2	492.05	467.08	470.45	-4.4
Construction:								
Current dollars .....	22.52	22.87	22.87	1.6	840.00	866.77	848.48	1.0
Constant (1982) dollars .....	10.65	10.45	10.47	-1.7	397.42	396.17	388.36	-2.3
Manufacturing:								
Current dollars .....	18.06	18.43	18.49	2.4	727.82	750.10	756.24	3.9
Constant (1982) dollars .....	8.54	8.42	8.46	-.9	344.34	342.85	346.14	.5
Private service-providing:								
Current dollars .....	18.09	18.58	18.55	2.5	578.88	601.99	593.60	2.5
Constant (1982) dollars .....	8.56	8.49	8.49	-.8	273.88	275.15	271.70	-.8
Trade, transportation, and utilities:								
Current dollars .....	16.14	16.62	16.54	2.5	531.01	548.46	545.82	2.8
Constant (1982) dollars .....	7.64	7.60	7.57	-.9	251.23	250.68	249.83	-.6
Wholesale trade:								
Current dollars .....	20.36	21.40	21.50	5.6	767.57	817.48	806.25	5.0
Constant (1982) dollars .....	9.63	9.78	9.84	2.2	363.15	373.65	369.03	1.6
Retail trade:								
Current dollars .....	12.74	13.04	12.98	1.9	380.93	388.59	389.40	2.2
Constant (1982) dollars .....	6.03	5.96	5.94	-1.5	180.22	177.61	178.23	-1.1
Transportation and warehousing:								
Current dollars .....	18.62	18.78	18.73	.6	679.63	689.23	693.01	2.0
Constant (1982) dollars .....	8.81	8.58	8.57	-2.7	321.54	315.03	317.20	-1.3
Utilities:								
Current dollars .....	29.28	30.06	30.32	3.6	1,256.11	1,268.53	1,267.38	.9
Constant (1982) dollars .....	13.85	13.74	13.88	.2	594.28	579.81	580.10	-2.4
Information:								
Current dollars .....	24.86	25.88	25.75	3.6	917.33	965.32	939.88	2.5
Constant (1982) dollars .....	11.76	11.83	11.79	.3	434.00	441.22	430.20	-.9
Financial activities:								
Current dollars .....	20.50	21.18	21.12	3.0	731.85	779.42	753.98	3.0
Constant (1982) dollars .....	9.70	9.68	9.67	-.3	346.25	356.25	345.11	-.3
Professional and business services:								
Current dollars .....	22.01	22.67	22.61	2.7	761.55	802.52	784.57	3.0
Constant (1982) dollars .....	10.41	10.36	10.35	-.6	360.30	366.81	359.11	-.3
Education and health services:								
Current dollars .....	19.23	19.58	19.64	2.1	621.13	636.35	632.41	1.8
Constant (1982) dollars .....	9.10	8.95	8.99	-1.2	293.87	290.86	289.46	-1.5
Leisure and hospitality:								
Current dollars .....	11.05	11.31	11.37	2.9	270.73	280.49	277.43	2.5
Constant (1982) dollars .....	5.23	5.17	5.20	-.6	128.09	128.20	126.98	-.9
Other services:								
Current dollars .....	16.27	16.48	16.57	1.8	496.24	505.94	503.73	1.5
Constant (1982) dollars .....	7.70	7.53	7.58	-1.6	234.78	231.25	230.57	-1.8

<sup>1</sup> The deflator for the constant-dollar series presented in this release is the Consumer Price Index for Urban Wage Earners and Clerical Workers (CPI-W).

<sup>2</sup> Data relate to production workers in mining and logging

and manufacturing, construction workers in construction, and nonsupervisory workers in the service-providing industries. These groups account for approximately four-fifths of the total employment on private nonfarm payrolls.

<sup>P</sup> = preliminary.

**Table 2. Earnings of production and nonsupervisory workers<sup>1</sup> on private nonfarm payrolls, seasonally adjusted**

Year and month	Average hourly earnings		Average weekly earnings	
	Current dollars	Constant (1982) dollars <sup>2</sup>	Current dollars	Constant (1982) dollars <sup>2</sup>
2008: Dec.	\$18.40	\$8.65	\$612.72	\$288.12
2009: Jan.	18.43	8.64	613.72	287.60
Feb.	18.46	8.61	614.72	286.80
Mar.	18.50	8.64	612.35	286.10
Apr.	18.50	8.65	612.35	286.16
May	18.53	8.65	613.34	286.25
June	18.54	8.57	611.82	282.94
July	18.59	8.59	615.33	284.48
Aug.	18.66	8.58	617.65	283.98
Sept.	18.68	8.57	618.31	283.77
Oct.	18.74	8.57	618.42	282.88
Nov. <sup>P</sup>	18.77	8.54	623.16	283.59
Dec. <sup>P</sup>	18.80	8.54	624.16	283.58

<sup>1</sup> See footnote 2, table 1.

<sup>2</sup> The deflator for the constant-dollar series presented in this release is the Consumer

Price Index for Urban Wage Earners and Clerical Workers (CPI-W).

<sup>P</sup> = preliminary.

# Explanatory Note

The earnings series presented in this release are derived from the Bureau of Labor Statistics' Current Employment Statistics (CES) survey, a monthly establishment survey of employment, payroll, and hours. The deflator used for constant-dollar earnings series presented in this release is derived from the Consumer Price Index for Urban Wage Earners and Clerical Workers (CPI-W).

For the purpose of the Real Earnings series, the CPI-W is converted from the base of 1982-84 that is used in the official, published series to a base of 1982. Thus, the constant dollar average hourly and weekly earnings series are in 1982 dollars. To avoid confusion for users, the CPI data presented in Table A are the official, published CPI-W series. These data may differ slightly from those used in the real earnings calculations.

Seasonally adjusted data are used for estimates of percent change from the same month a year ago for current and constant average hourly and weekly earnings that are presented in Table B of this release. Special techniques are applied to the CES hours and earnings data in the seasonal adjustment process to mitigate the effect of certain calendar-related fluctuations. Thus, over-the-year changes of these hours and earnings are best measured using seasonally adjusted series. A discussion of the calendar-related fluctuations in the hours and earnings data and the special techniques to remove them is available in the February 2004 issue of *Employment and Earnings* or on the Internet under 'Technical Notes' (<http://www.bls.gov/ces/>).

Earnings series from the monthly establishment series are estimated arithmetic averages (means) of the hourly and weekly earnings of all production and nonsupervisory jobs in the private nonfarm sector of the economy. Average hourly earnings estimates are derived by dividing the estimated industry payroll--for all production and nonsupervisory jobs--by the corresponding paid hours. Average weekly hours estimates are similarly derived by dividing estimated aggregate hours by the corresponding number of production and nonsupervisory jobs. Average weekly earnings estimates are derived by multiplying the average hourly earnings and the average weekly hours estimates. This is equivalent to dividing the estimated payroll by the number of production and nonsupervisory jobs. The weekly and hourly earnings estimates for aggregate industries, such as the major industry division and the total private

sector averages printed in this release, are derived by summing the corresponding payroll, hours, and employment estimates of the component industries. As a result, each industry receives a "weight" in the published averages that corresponds to its current level of activity (employment or total hours). This further implies that fluctuations and varying trends in employment in high-wage versus low-wage industries as well as wage rate changes influence the earnings averages.

There are several characteristics of the series presented in this release that limit their suitability for some types of economic analyses. (1) The denominator for the weekly earnings series is the number of private nonfarm production and nonsupervisory worker jobs. This number includes full-time and part-time jobs as well as the jobs held by multiple jobholders in the private nonfarm sector. These factors tend to result in weekly earnings averages significantly lower than the corresponding numbers for full-time jobs. (2) Annual earnings averages can differ significantly from the result obtained by multiplying average weekly earnings times 52 weeks. The difference may be due to factors such as turnovers and layoffs. (3) The series are the average earnings of all production and nonsupervisory jobs, not the earnings average of "typical" jobs or jobs held by "typical" workers. Specifically, there are no adjustments for occupational, age, or schooling variations or for household type or location. Many studies have established the significance of these factors and that their impact varies over time.

Seasonally adjusted data (table 2) are preferred by some users for analyzing general earnings trends in the economy since they eliminate the effect of changes that normally occur at the same time and in about the same magnitude each year and, therefore, reveal the underlying trends and cyclical movements. Changes in average earnings may be due to seasonal changes in the proportion of workers in high-wage and low-wage industries or occupations or to seasonal changes in the amount of overtime work, and so on.

For more information, see Thomas Gavett, "Measures of Change in Real Wages and Earnings," *Monthly Labor Review*, February 1972.

Information in this release will be made available to sensory impaired individuals upon request. Voice phone: 202-691-5200; TDD Message Referral Phone Number: 1-800-877-8339.