



**Transmission of material in this release is embargoed until
 8:30 a.m. (ET) Tuesday, June 13, 2023**

USDL-23-1301

Technical information: (202) 691-7000 • cpi_info@bls.gov • www.bls.gov/cpi
 Media contact: (202) 691-5902 • PressOffice@bls.gov

CONSUMER PRICE INDEX – MAY 2023

The Consumer Price Index for All Urban Consumers (CPI-U) rose 0.1 percent in May on a seasonally adjusted basis, after increasing 0.4 percent in April, the U.S. Bureau of Labor Statistics reported today. Over the last 12 months, the all items index increased 4.0 percent before seasonal adjustment.

The index for shelter was the largest contributor to the monthly all items increase, followed by an increase in the index for used cars and trucks. The food index increased 0.2 percent in May after being unchanged in the previous 2 months. The index for food at home rose 0.1 percent over the month while the index for food away from home rose 0.5 percent. The energy index, in contrast, declined 3.6 percent in May as the major energy component indexes fell.

The index for all items less food and energy rose 0.4 percent in May, as it did in April and March. Indexes which increased in May include shelter, used cars and trucks, motor vehicle insurance, apparel, and personal care. The index for household furnishings and operations and the index for airline fares were among those that decreased over the month.

The all items index increased 4.0 percent for the 12 months ending May; this was the smallest 12-month increase since the period ending March 2021. The all items less food and energy index rose 5.3 percent over the last 12 months. The energy index decreased 11.7 percent for the 12 months ending May, and the food index increased 6.7 percent over the last year.

Chart 1. One-month percent change in CPI for All Urban Consumers (CPI-U), seasonally adjusted, May 2022 - May 2023
 Percent change

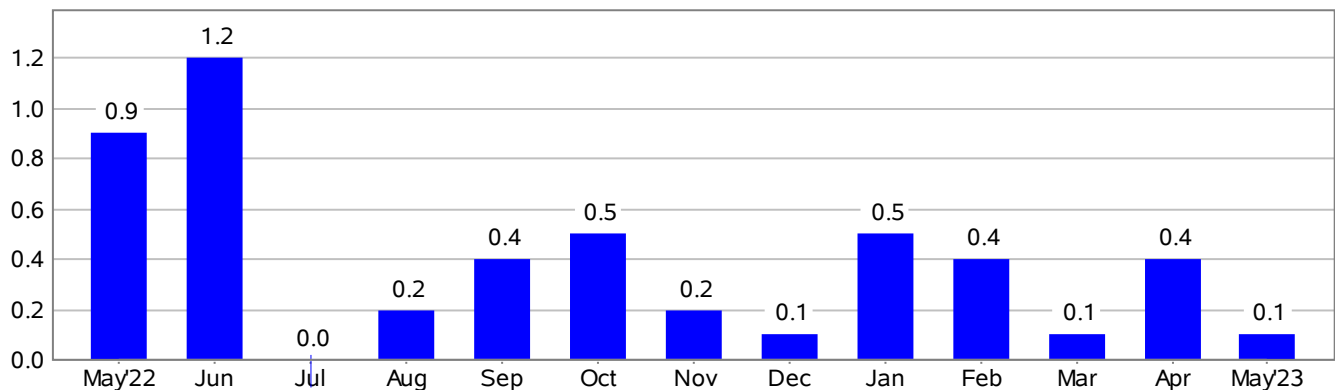


Chart 2. 12-month percent change in CPI for All Urban Consumers (CPI-U), not seasonally adjusted, May 2022 - May 2023

Percent change

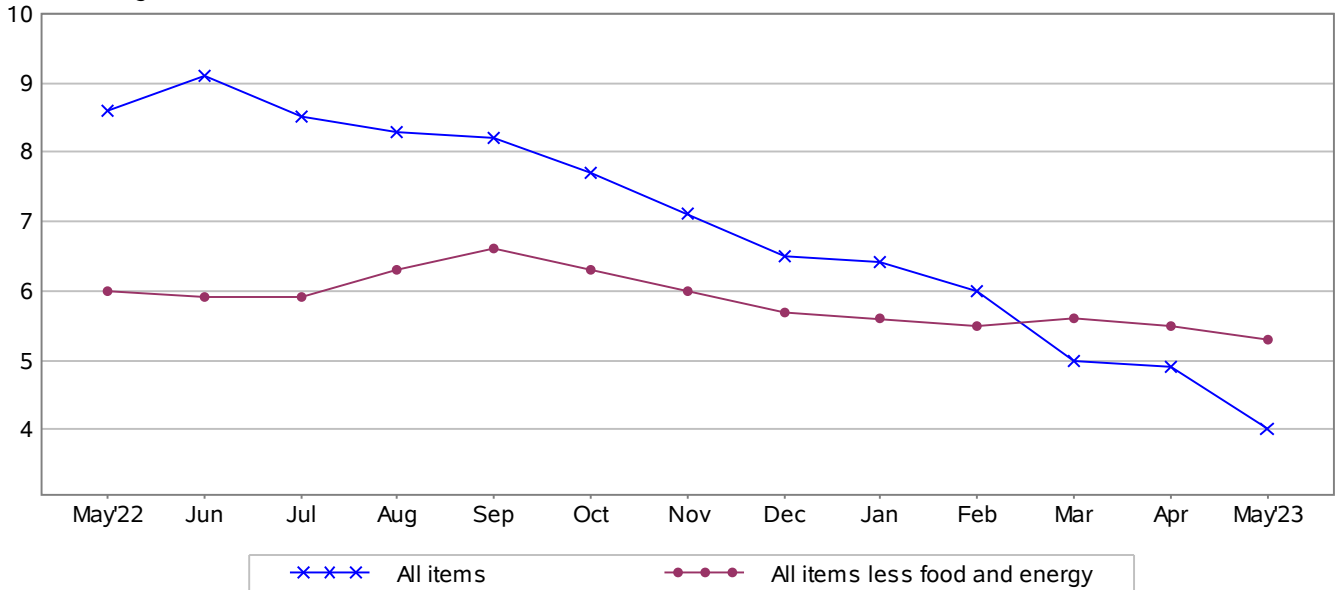


Table A. Percent changes in CPI for All Urban Consumers (CPI-U): U.S. city average

	Seasonally adjusted changes from preceding month							Un-adjusted 12-mos. ended May 2023
	Nov. 2022	Dec. 2022	Jan. 2023	Feb. 2023	Mar. 2023	Apr. 2023	May 2023	
All items.....	0.2	0.1	0.5	0.4	0.1	0.4	0.1	4.0
Food.....	0.6	0.4	0.5	0.4	0.0	0.0	0.2	6.7
Food at home.....	0.6	0.5	0.4	0.3	-0.3	-0.2	0.1	5.8
Food away from home ¹	0.5	0.4	0.6	0.6	0.6	0.4	0.5	8.3
Energy.....	-1.4	-3.1	2.0	-0.6	-3.5	0.6	-3.6	-11.7
Energy commodities.....	-2.1	-7.2	1.9	0.5	-4.6	2.7	-5.6	-20.4
Gasoline (all types).....	-2.3	-7.0	2.4	1.0	-4.6	3.0	-5.6	-19.7
Fuel oil ¹	1.7	-16.6	-1.2	-7.9	-4.0	-4.5	-7.7	-37.0
Energy services.....	-0.6	1.9	2.1	-1.7	-2.3	-1.7	-1.4	1.6
Electricity.....	0.5	1.3	0.5	0.5	-0.7	-0.7	-1.0	5.9
Utility (piped) gas service.....	-3.4	3.5	6.7	-8.0	-7.1	-4.9	-2.6	-11.0
All items less food and energy.....	0.3	0.4	0.4	0.5	0.4	0.4	0.4	5.3
Commodities less food and energy commodities.....	-0.2	-0.1	0.1	0.0	0.2	0.6	0.6	2.0
New vehicles.....	0.5	0.6	0.2	0.2	0.4	-0.2	-0.1	4.7
Used cars and trucks.....	-2.0	-2.0	-1.9	-2.8	-0.9	4.4	4.4	-4.2
Apparel.....	0.1	0.2	0.8	0.8	0.3	0.3	0.3	3.5
Medical care commodities ¹	0.2	0.1	1.1	0.1	0.6	0.5	0.6	4.4
Services less energy services.....	0.5	0.6	0.5	0.6	0.4	0.4	0.4	6.6
Shelter.....	0.6	0.8	0.7	0.8	0.6	0.4	0.6	8.0
Transportation services.....	0.3	0.6	0.9	1.1	1.4	-0.2	0.8	10.2
Medical care services.....	-0.5	0.3	-0.7	-0.7	-0.5	-0.1	-0.1	-0.1

¹ Not seasonally adjusted.

Food

The food index rose 0.2 percent in May. The food at home index increased 0.1 percent over the month, following a 0.2-percent decrease in April. Three of the six major grocery store food group indexes increased over the month. The index for fruits and vegetables increased 1.3 percent in May, following a 0.5-percent decrease in April. The other food at home index rose 0.4 percent over the month, and the nonalcoholic beverages index increased 0.7 percent.

The index for meats, poultry, fish, and eggs decreased 1.2 percent in May, as the index for eggs fell 13.8 percent, the largest decrease in that index since January 1951. The dairy and related products index declined 1.1 percent over the month, and the cereals and bakery products index was unchanged in May.

The food away from home index rose 0.5 percent in May. The index for full service meals increased 0.4 percent over the month and the index for limited service meals increased 0.5 percent.

The food at home index rose 5.8 percent over the last 12 months. The index for cereals and bakery products rose 10.7 percent over the 12 months ending in May. The remaining major grocery store food groups posted increases ranging from 0.3 percent (meats, poultry, fish, and eggs) to 9.2 percent (other food at home).

The index for food away from home rose 8.3 percent over the last year. The index for full service meals rose 6.8 percent over the last 12 months, and the index for limited service meals rose 8.0 percent over the same period.

Energy

The energy index fell 3.6 percent in May after rising 0.6 percent in April. The gasoline index decreased 5.6 percent in May, following a 3.0-percent increase in the previous month. (Before seasonal adjustment, gasoline prices fell 1.4 percent in May.)

Other energy components also declined. The natural gas index decreased 2.6 percent over the month, the fourth consecutive decrease in that index. The index for electricity decreased 1.0 percent in May, after falling 0.7 percent in both April and March. The fuel oil index also declined in May, down 7.7 percent.

The energy index fell 11.7 percent over the past 12 months. The gasoline index decreased 19.7 percent over the last 12 months, while the natural gas index fell 11.0 percent, and the fuel oil index fell 37.0 percent over the span. In contrast, the index for electricity rose 5.9 percent over the last year.

All items less food and energy

The index for all items less food and energy rose 0.4 percent in May, as it did in April and March. The shelter index increased 0.6 percent over the month after rising 0.4 percent in April. The index for rent rose 0.5 percent in May, as did the index for owners' equivalent rent. The index for lodging away from home increased 1.8 percent in May after decreasing 3.0 percent in April.

The shelter index was the largest factor in the monthly increase in the index for all items less food and energy. Among the other indexes that rose in May was the index for used cars and trucks, which increased 4.4 percent, and the index for motor vehicle insurance which increased 2.0 percent. The indexes for apparel, personal care, and education also increased in May.

Several indexes declined in May, led by the household furnishings and operations index which fell 0.6 percent over the month. This was the first decline in that index since June 2021 and also the largest 1-month decline since August 2009. The index for airline fares decreased 3.0 percent over the month, following a 2.6-percent decline in April. The index for communication fell 0.3 percent over the month. The index for new vehicles and the index for recreation each declined 0.1 percent in May.

The medical care index increased 0.1 percent in May, after being unchanged the previous month. The index for hospital services rose 1.0 percent over the month, after a 0.5-percent increase in April. The prescription drugs index increased 0.1 percent in May, while the physicians' services index declined 0.5 percent.

The index for all items less food and energy rose 5.3 percent over the past 12 months. The shelter index increased 8.0 percent over the last year, accounting for over 60 percent of the total increase in all items less food and energy. Other indexes with notable increases over the last year include motor vehicle insurance (+17.1 percent), recreation (+4.5 percent), household furnishings and operations (+4.2 percent), and new vehicles (+4.7 percent).

Not seasonally adjusted CPI measures

The Consumer Price Index for All Urban Consumers (CPI-U) increased 4.0 percent over the last 12 months to an index level of 304.127 (1982-84=100). For the month, the index increased 0.3 percent prior to seasonal adjustment.

The Consumer Price Index for Urban Wage Earners and Clerical Workers (CPI-W) increased 3.6 percent over the last 12 months to an index level of 298.382 (1982-84=100). For the month, the index increased 0.2 percent prior to seasonal adjustment.

The Chained Consumer Price Index for All Urban Consumers (C-CPI-U) increased 4.3 percent over the last 12 months. For the month, the index increased 0.2 percent on a not seasonally adjusted basis. Please note that the indexes for the past 10 to 12 months are subject to revision.

The Consumer Price Index for June 2023 is scheduled to be released on Wednesday, July 12, 2023, at 8:30 a.m. (ET).

Technical Note

Brief Explanation of the CPI

The Consumer Price Index (CPI) measures the change in prices paid by consumers for goods and services. The CPI reflects spending patterns for each of two population groups: all urban consumers and urban wage earners and clerical workers. The all urban consumer group represents over 90 percent of the total U.S. population. It is based on the expenditures of almost all residents of urban or metropolitan areas, including professionals, the self-employed, the poor, the unemployed, and retired people, as well as urban wage earners and clerical workers. Not included in the CPI are the spending patterns of people living in rural nonmetropolitan areas, farming families, people in the Armed Forces, and those in institutions, such as prisons and mental hospitals. Consumer inflation for all urban consumers is measured by two indexes, namely, the Consumer Price Index for All Urban Consumers (CPI-U) and the Chained Consumer Price Index for All Urban Consumers (C-CPI-U).

The Consumer Price Index for Urban Wage Earners and Clerical Workers (CPI-W) is based on the expenditures of households included in the CPI-U definition that meet two requirements: more than one-half of the household's income must come from clerical or wage occupations, and at least one of the household's earners must have been employed for at least 37 weeks during the previous 12 months. The CPI-W population represents approximately 30 percent of the total U.S. population and is a subset of the CPI-U population.

The CPIs are based on prices of food, clothing, shelter, fuels, transportation, doctors' and dentists' services, drugs, and other goods and services that people buy for day-to-day living. Prices are collected each month in 75 urban areas across the country from about 6,000 housing units and approximately 22,000 retail establishments (department stores, supermarkets, hospitals, filling stations, and other types of stores and service establishments). All taxes directly associated with the purchase and use of items are included in the index. Prices of fuels and a few other items are obtained every month in all 75 locations. Prices of most other commodities and services are collected every month in the three largest geographic areas and every other month in other areas. Prices of most goods and services are obtained by personal visit, telephone call, or web collection by the Bureau's trained representatives.

In calculating the index, price changes for the various items in each location are aggregated using weights, which represent their importance in the spending of the appropriate population group. Local data are then combined to obtain a U.S. city average. For the CPI-U and CPI-W, separate indexes are also published by size of city, by region of the country, for cross-classifications of regions and population-size classes, and for 23 selected local areas. Area indexes do not measure differences in the level of prices among cities; they only measure the average change in prices for each area since the base period. For the C-CPI-U, data are issued only at the national level. The CPI-U and CPI-W are considered final when released, but the C-CPI-U is issued in preliminary form and subject to three subsequent quarterly revisions.

The index measures price change from a designed reference date. For most of the CPI-U and the CPI-W, the reference base is 1982-84 equals 100. The reference base for the C-CPI-U is December 1999 equals 100. An increase of 7 percent from the reference base, for example, is shown as 107.000. Alternatively, that relationship can also be expressed as the price of a base period market basket of goods and services rising from \$100 to \$107.

Sampling Error in the CPI

The CPI is a statistical estimate that is subject to sampling error because it is based upon a sample of retail prices and not the complete universe of all prices. BLS calculates and publishes estimates of the 1-month, 2-month, 6-month, and 12-month percent change standard errors annually for the CPI-U. These standard error estimates can be used to construct confidence intervals for hypothesis testing. For example, the estimated standard error of the 1-month percent change is 0.03 percent for the U.S. all items CPI. This means that if we repeatedly sample from the universe of all retail prices using the same methodology, and estimate a percentage change for each sample, then 95 percent of these estimates will be within 0.06 percent of the 1-month percentage change based on all retail prices. For example, for a 1-month change of 0.2 percent in the all items CPI-U, we are 95 percent confident that the actual percent change based on all retail prices would fall between 0.14 and 0.26 percent. For the latest data, including information on how to use the estimates of standard error, see www.bls.gov/cpi/tables/variance-estimates/home.htm.

Calculating Index Changes

Movements of the indexes from 1 month to another are usually expressed as percent changes rather than changes in index points, because index point changes are affected by the level of the index in relation to its base period, while percent changes are not. The following table shows an example of using index values to calculate percent changes:

	Item A	Item B	Item C
Year I	112.500	225.000	110.000
Year II	121.500	243.000	128.000
Change in index points	9.000	18.000	18.000
Percent change	$9.0/112.500 \times 100 = 8.0$	$18.0/225.000 \times 100 = 8.0$	$18.0/110.000 \times 100 = 16.4$

Use of Seasonally Adjusted and Unadjusted Data

The Consumer Price Index (CPI) program produces both unadjusted and seasonally adjusted data. Seasonally adjusted data are computed using seasonal factors derived by the X-13ARIMA-SEATS seasonal adjustment method. These factors are updated each February, and the new factors are used to revise the previous 5 years of seasonally adjusted data. The factors are available at www.bls.gov/cpi/tables/seasonal-adjustment/seasonal-factors-2023.xlsx. For more information on data revision scheduling, please see the Factsheet on Seasonal Adjustment at www.bls.gov/cpi/seasonal-adjustment/questions-and-answers.htm and the Timeline of Seasonal Adjustment Methodological Changes at www.bls.gov/cpi/seasonal-adjustment/timeline-seasonal-adjustment-methodology-changes.htm.

How to Use Seasonally Adjusted and Unadjusted Data

For analyzing short-term price trends in the economy, seasonally adjusted changes are usually preferred since they eliminate the effect of changes that normally occur at the same time and in about the same magnitude every year—such as price movements resulting from weather events, production cycles, model changeovers, holidays, and sales. This allows data users to focus on changes that are not typical for the time of year.

The unadjusted data are of primary interest to consumers concerned about the prices they actually pay. Unadjusted data are also used extensively for escalation purposes. Many collective bargaining contract agreements and pension plans, for example, tie compensation changes to the Consumer Price Index before adjustment for seasonal variation. BLS advises against the use of seasonally adjusted data in escalation agreements because seasonally adjusted series are revised annually.

Intervention Analysis

The Bureau of Labor Statistics uses intervention analysis seasonal adjustment (IASA) for some CPI series. Sometimes extreme values or sharp movements can distort the underlying seasonal pattern of price change. Intervention analysis seasonal adjustment is a process by which the distortions caused by such unusual events are estimated and removed from the data prior to calculation of seasonal factors. The resulting seasonal factors, which more accurately represent the seasonal pattern, are then applied to the unadjusted data.

For example, this procedure was used for the motor fuel series to offset the effects of the 2009 return to normal pricing after the worldwide economic downturn in 2008. Retaining this outlier data during seasonal factor calculation would distort the computation of the seasonal portion of the time series data for motor fuel, so it was estimated and removed from the data prior to seasonal adjustment. Following that, seasonal factors were calculated based on this “prior adjusted” data. These seasonal factors represent a clearer picture of the seasonal pattern in the data. The last step is for motor fuel seasonal factors to be applied to the unadjusted data.

For the seasonal factors introduced for January 2023, BLS adjusted 57 series using intervention analysis seasonal adjustment, including selected food and beverage items, motor fuels and vehicles.

Revision of Seasonally Adjusted Indexes

Seasonally adjusted data, including the U.S. city average all items index levels, are subject to revision for up to 5 years after their original release. Every year, economists in the CPI calculate new seasonal factors for seasonally adjusted series and apply them to the last 5 years of data. Seasonally adjusted indexes beyond the last 5 years of data are considered to be final and not subject to revision. For January 2023, revised seasonal factors and seasonally adjusted indexes for 2018 to 2022 were calculated and published. For series which are directly adjusted using the Census X-13ARIMA-SEATS seasonal adjustment software, the seasonal factors for 2022 will be applied to data for 2023 to produce the seasonally adjusted 2023 indexes. Series which are indirectly seasonally adjusted by summing seasonally adjusted component series have seasonal factors which are derived and are therefore not available in advance.

Determining Seasonal Status

Each year the seasonal status of every series is reevaluated based upon certain statistical criteria. Using these criteria, BLS economists determine whether a series should change its status from "not seasonally adjusted" to "seasonally adjusted", or vice versa. If any of the 81 components of the U.S. city average all items index change their seasonal adjustment status from seasonally adjusted to not seasonally adjusted, not seasonally adjusted data will be used in the aggregation of the dependent series for the last 5 years, but the seasonally adjusted indexes before that period will not be changed. For 2023, 37 of the 81 components of the U.S. city average all items index are not seasonally adjusted.

Contact Information

For additional information about the CPI visit www.bls.gov/cpi or contact the CPI Information and Analysis Section at 202-691-7000 or cpi_info@bls.gov.

For additional information on seasonal adjustment in the CPI visit www.bls.gov/cpi/seasonal-adjustment/home.htm

If you are deaf, hard of hearing, or have a speech disability, please dial 7-1-1 to access telecommunications relay services.

Table 1. Consumer Price Index for All Urban Consumers (CPI-U): U.S. city average, by expenditure category, May 2023

[1982-84=100, unless otherwise noted]

Expenditure category	Relative importance Apr. 2023	Unadjusted indexes			Unadjusted percent change		Seasonally adjusted percent change		
		May 2022	Apr. 2023	May 2023	May 2022-May 2023	Apr. 2023-May 2023	Feb. 2023-Mar. 2023	Mar. 2023-Apr. 2023	Apr. 2023-May 2023
All items.....	100.000	292.296	303.363	304.127	4.0	0.3	0.1	0.4	0.1
Food.....	13.436	302.038	321.566	322.249	6.7	0.2	0.0	0.0	0.2
Food at home.....	8.632	285.953	302.328	302.535	5.8	0.1	-0.3	-0.2	0.1
Cereals and bakery products.....	1.168	319.930	353.742	354.195	10.7	0.1	0.6	0.2	0.0
Meats, poultry, fish, and eggs.....	1.799	314.929	318.996	315.968	0.3	-0.9	-1.4	-0.3	-1.2
Dairy and related products.....	0.799	257.678	271.102	269.573	4.6	-0.6	-0.1	-0.7	-1.1
Fruits and vegetables.....	1.467	341.594	346.269	350.986	2.7	1.4	-1.3	-0.5	1.3
Nonalcoholic beverages and beverage materials.....	1.043	199.166	215.833	216.460	8.7	0.3	0.2	-0.1	0.7
Other food at home.....	2.354	247.300	269.657	269.999	9.2	0.1	0.4	0.2	0.4
Food away from home ¹	4.804	325.952	351.237	352.892	8.3	0.5	0.6	0.4	0.5
Energy.....	6.978	316.761	283.352	279.816	-11.7	-1.2	-3.5	0.6	-3.6
Energy commodities.....	3.732	402.040	325.269	319.876	-20.4	-1.7	-4.6	2.7	-5.6
Fuel oil ¹	0.123	564.147	384.903	355.185	-37.0	-7.7	-4.0	-4.5	-7.7
Motor fuel.....	3.547	393.950	319.843	315.310	-20.0	-1.4	-4.7	2.8	-5.6
Gasoline (all types).....	3.459	391.262	318.482	314.116	-19.7	-1.4	-4.6	3.0	-5.6
Energy services.....	3.247	249.129	255.185	253.204	1.6	-0.8	-2.3	-1.7	-1.4
Electricity.....	2.511	247.461	263.216	262.135	5.9	-0.4	-0.7	-0.7	-1.0
Utility (piped) gas service.....	0.735	248.854	226.062	221.484	-11.0	-2.0	-7.1	-4.9	-2.6
All items less food and energy.....	79.586	292.506	306.899	308.096	5.3	0.4	0.4	0.4	0.4
Commodities less food and energy.....	21.347	165.140	167.833	168.499	2.0	0.4	0.2	0.6	0.6
Apparel.....	2.565	126.970	131.762	131.382	3.5	-0.3	0.3	0.3	0.3
New vehicles.....	4.278	171.350	178.892	179.329	4.7	0.2	0.4	-0.2	-0.1
Used cars and trucks.....	2.673	208.373	193.394	199.576	-4.2	3.2	-0.9	4.4	4.4
Medical care commodities ¹	1.456	386.273	400.755	403.358	4.4	0.6	0.6	0.5	0.6
Alcoholic beverages.....	0.836	272.293	283.961	285.285	4.8	0.5	0.1	0.5	0.5
Tobacco and smoking products ¹	0.496	1,338.572	1,414.924	1,423.094	6.3	0.6	0.8	0.1	0.6
Services less energy services.....	58.238	370.937	393.769	395.295	6.6	0.4	0.4	0.4	0.4
Shelter.....	34.564	350.580	376.636	378.776	8.0	0.6	0.6	0.4	0.6
Rent of primary residence.....	7.542	365.116	394.898	396.726	8.7	0.5	0.5	0.6	0.5
Owners' equivalent rent of residences ²	25.432	358.469	385.366	387.323	8.0	0.5	0.5	0.5	0.5
Medical care services.....	6.423	594.243	594.346	593.738	-0.1	-0.1	-0.5	-0.1	-0.1
Physicians' services ¹	1.799	410.249	411.951	409.885	-0.1	-0.5	-0.2	0.0	-0.5
Hospital services ^{1, 3}	1.909	375.273	385.355	389.166	3.7	1.0	-0.4	0.5	1.0
Transportation services.....	5.884	357.437	390.805	393.836	10.2	0.8	1.4	-0.2	0.8
Motor vehicle maintenance and repair ¹	1.106	333.258	375.890	378.182	13.5	0.6	0.3	0.5	0.6
Motor vehicle insurance.....	2.591	594.437	684.166	695.929	17.1	1.7	1.2	1.4	2.0
Airline fares.....	0.630	344.853	294.550	298.489	-13.4	1.3	4.0	-2.6	-3.0

¹ Not seasonally adjusted.

² Indexes on a December 1982=100 base.

³ Indexes on a December 1996=100 base.

Table 2. Consumer Price Index for All Urban Consumers (CPI-U): U.S. city average, by detailed expenditure category, May 2023

[1982-84=100, unless otherwise noted]

Expenditure category	Relative importance Apr. 2023	Unadjusted percent change		Seasonally adjusted percent change		
		May 2022-May 2023	Apr. 2023-May 2023	Feb. 2023-Mar. 2023	Mar. 2023-Apr. 2023	Apr. 2023-May 2023
All items.....	100.000	4.0	0.3	0.1	0.4	0.1
Food.....	13.436	6.7	0.2	0.0	0.0	0.2
Food at home.....	8.632	5.8	0.1	-0.3	-0.2	0.1
Cereals and bakery products.....	1.168	10.7	0.1	0.6	0.2	0.0
Cereals and cereal products.....	0.365	9.3	0.0	0.6	0.2	-0.6
Flour and prepared flour mixes.....	0.061	17.1	1.4	0.0	0.5	0.0
Breakfast cereal ¹	0.146	8.5	0.0	2.4	0.1	0.0
Rice, pasta, cornmeal.....	0.159	7.1	-0.5	0.2	0.4	-1.2
Rice ^{1, 2, 3}		5.9	-0.2	0.5	0.1	-0.2
Bakery products ¹	0.803	11.4	0.2	0.7	0.0	0.2
Bread ^{1, 2}	0.224	12.5	0.4	0.4	-0.3	0.4
White bread ^{1, 3}		13.4	-0.2	1.0	0.1	-0.2
Bread other than white ^{1, 3}		11.2	0.8	-0.3	-0.8	0.8
Fresh biscuits, rolls, muffins ²	0.119	11.6	-1.3	-0.7	2.5	-1.1
Cakes, cupcakes, and cookies ¹	0.208	11.0	0.2	0.7	-0.3	0.2
Cookies ^{1, 3}		10.9	-0.5	0.5	-0.3	-0.5
Fresh cakes and cupcakes ^{1, 3}		11.1	0.9	0.8	0.2	0.9
Other bakery products.....	0.252	10.7	0.6	1.9	-0.1	0.3
Fresh sweetrolls, coffeeecakes, doughnuts ^{1, 3}		5.7	-0.3	1.3	-0.3	-0.3
Crackers, bread, and cracker products ³		12.4	1.2	1.3	0.2	0.5
Frozen and refrigerated bakery products, pies, tarts, turnovers ³		12.1	0.4	2.8	-0.8	0.1
Meats, poultry, fish, and eggs.....	1.799	0.3	-0.9	-1.4	-0.3	-1.2
Meats, poultry, and fish.....	1.654	0.5	0.2	-0.5	-0.2	-0.1
Meats.....	1.023	0.4	0.5	-0.3	-0.4	0.2
Beef and veal.....	0.440	1.0	1.5	-0.3	0.3	1.0
Uncooked ground beef ¹	0.156	0.6	2.0	0.4	0.6	2.0
Uncooked beef roasts ²	0.057	0.0	3.2	-2.3	1.5	1.2
Uncooked beef steaks ²	0.184	2.5	1.0	0.4	0.8	0.1
Uncooked other beef and veal ^{1, 2}	0.043	-2.4	-0.9	-0.4	1.8	-0.9
Pork.....	0.328	-2.9	0.1	-1.1	-1.2	-0.8
Bacon, breakfast sausage, and related products ²	0.140	-5.6	-0.7	0.3	-2.1	-0.9
Bacon and related products ³		-9.8	-1.4	1.0	-2.2	-1.3
Breakfast sausage and related products ^{2, 3}		2.1	0.3	-0.9	-1.8	-0.7
Ham.....	0.067	8.2	3.7	-4.8	2.0	1.6
Ham, excluding canned ³		8.5	4.3	-5.1	1.6	1.6
Pork chops ¹	0.044	-2.2	-1.5	-1.4	0.6	-1.5
Other pork including roasts, steaks, and ribs ²	0.077	-7.3	-0.9	-1.6	-0.4	-2.5
Other meats.....	0.255	5.0	-0.8	0.9	-0.5	0.2
Frankfurters ³		1.1	-2.6	-2.9	-2.9	0.8
Lunchmeats ^{1, 2, 3}		6.2	-0.4	1.3	0.5	-0.4
Poultry ¹	0.345	2.1	0.2	-0.4	0.6	0.2
Chicken ^{1, 2}	0.276	0.9	0.3	-0.6	0.5	0.3
Fresh whole chicken ^{1, 3}		4.4	1.9	-0.8	0.0	1.9
Fresh and frozen chicken parts ^{1, 3}		-0.7	-0.5	-0.4	0.6	-0.5
Other uncooked poultry including turkey ²	0.070	6.9	-0.2	1.0	1.2	-2.0
Fish and seafood.....	0.285	-1.1	-0.8	-1.2	-0.7	-1.6
Fresh fish and seafood ^{1, 2}	0.140	-2.0	-0.9	-0.6	0.0	-0.9
Processed fish and seafood ²	0.146	-0.1	-0.8	-0.4	-0.7	-2.0
Shelf stable fish and seafood ³		0.4	-0.6	-1.8	-1.7	-1.7
Frozen fish and seafood ³		0.3	-0.8	0.8	0.4	-2.2
Eggs ¹	0.145	-0.4	-13.8	-10.9	-1.5	-13.8

See footnotes at end of table.

Table 2. Consumer Price Index for All Urban Consumers (CPI-U): U.S. city average, by detailed expenditure category, May 2023 — Continued
 [1982-84=100, unless otherwise noted]

Expenditure category	Relative importance Apr. 2023	Unadjusted percent change		Seasonally adjusted percent change		
		May 2022- May 2023	Apr. 2023- May 2023	Feb. 2023- Mar. 2023	Mar. 2023- Apr. 2023	Apr. 2023- May 2023
Dairy and related products.....	0.799	4.6	-0.6	-0.1	-0.7	-1.1
Milk ²	0.195	-0.8	0.4	-1.0	-2.0	-0.6
Fresh whole milk ³		-3.4	0.1	-1.3	-2.1	-1.0
Fresh milk other than whole ^{2, 3}		0.6	0.4	-0.6	-1.9	-0.5
Cheese and related products ¹	0.246	3.6	-0.4	0.0	0.1	-0.4
Ice cream and related products.....	0.122	8.0	-2.0	1.2	-0.7	-0.2
Other dairy and related products ²	0.237	9.3	-0.8	-0.8	-0.2	-1.3
Fruits and vegetables.....	1.467	2.7	1.4	-1.3	-0.5	1.3
Fresh fruits and vegetables.....	1.091	0.6	1.3	-1.7	-0.2	1.4
Fresh fruits.....	0.587	-0.5	1.3	-1.7	-0.5	1.5
Apples.....	0.085	7.7	1.9	-0.5	0.4	1.9
Bananas ¹	0.090	1.3	-0.1	-1.5	0.2	-0.1
Citrus fruits ²	0.175	-5.3	0.8	-0.3	-2.7	-1.1
Oranges, including tangerines ³		-4.7	2.1	0.5	-3.8	-0.4
Other fresh fruits ²	0.237	-0.7	2.0	-2.7	0.2	3.4
Fresh vegetables.....	0.503	2.0	1.2	-1.7	0.3	1.3
Potatoes.....	0.087	7.1	1.8	-1.6	-0.1	0.2
Lettuce.....	0.071	9.4	3.4	-5.7	3.5	5.3
Tomatoes.....	0.079	-3.5	-1.9	-2.1	-2.0	0.7
Other fresh vegetables.....	0.266	1.0	1.4	-0.9	0.3	1.0
Processed fruits and vegetables ²	0.376	9.5	1.6	-0.3	-1.6	1.0
Canned fruits and vegetables ²	0.192	7.8	1.0	-0.7	-0.7	0.2
Canned fruits ^{2, 3}		8.7	1.3	-0.7	-0.6	0.9
Canned vegetables ^{2, 3}		6.9	0.9	-0.7	-1.6	0.1
Frozen fruits and vegetables ²	0.110	12.9	2.1	-0.2	-2.0	1.9
Frozen vegetables ³		18.7	1.8	-0.3	-0.8	1.4
Other processed fruits and vegetables including dried ²	0.075	9.3	2.5	-1.4	-0.4	2.1
Dried beans, peas, and lentils ^{1, 2, 3}		2.0	2.3	-0.3	-1.7	2.3
Nonalcoholic beverages and beverage materials.....	1.043	8.7	0.3	0.2	-0.1	0.7
Juices and nonalcoholic drinks ²	0.734	9.9	0.3	0.3	0.4	1.0
Carbonated drinks.....	0.309	9.5	-0.7	0.4	1.8	-0.1
Frozen noncarbonated juices and drinks ^{1, 2}	0.008	15.8	7.4	-0.4	-1.0	7.4
Nonfrozen noncarbonated juices and drinks ²	0.417	10.0	0.9	0.3	-0.5	1.7
Beverage materials including coffee and tea ²	0.309	5.9	0.3	0.0	-1.1	0.1
Coffee.....	0.198	4.8	0.6	-0.4	-1.4	0.1
Roasted coffee ³		4.5	0.6	0.0	-1.6	-0.4
Instant coffee ^{1, 3}		5.8	0.6	-2.4	0.5	0.6
Other beverage materials including tea ^{1, 2}	0.111	8.1	-0.1	0.7	-0.1	-0.1
Other food at home.....	2.354	9.2	0.1	0.4	0.2	0.4
Sugar and sweets ¹	0.302	10.2	0.4	-0.2	0.3	0.4
Sugar and sugar substitutes.....	0.041	11.1	0.8	-0.4	0.0	0.5
Candy and chewing gum ^{1, 2}	0.191	11.6	0.3	0.0	0.4	0.3
Other sweets ²	0.070	6.2	0.3	-1.3	-0.1	0.2
Fats and oils.....	0.256	11.8	0.6	-0.6	-0.4	0.2
Butter and margarine ²	0.081	9.2	1.4	-3.7	-1.2	0.1
Butter ³		3.1	1.0	-6.0	0.0	-1.0
Margarine ^{1, 3}		22.5	2.1	-1.5	-0.6	2.1
Salad dressing ²	0.061	14.3	0.2	0.7	-0.3	0.2
Other fats and oils including peanut butter ²	0.115	12.5	0.3	0.5	0.2	0.6
Peanut butter ^{1, 2, 3}		0.1	-0.9	-2.3	0.8	-0.9
Other foods.....	1.796	8.6	0.0	0.7	0.3	0.4
Soups.....	0.107	8.7	1.4	0.4	0.0	0.6
Frozen and freeze dried prepared foods.....	0.274	8.4	0.1	1.6	-0.6	0.3

See footnotes at end of table.

Table 2. Consumer Price Index for All Urban Consumers (CPI-U): U.S. city average, by detailed expenditure category, May 2023 — Continued
 [1982-84=100, unless otherwise noted]

Expenditure category	Relative importance Apr. 2023	Unadjusted percent change		Seasonally adjusted percent change		
		May 2022- May 2023	Apr. 2023- May 2023	Feb. 2023- Mar. 2023	Mar. 2023- Apr. 2023	Apr. 2023- May 2023
Snacks.....	0.382	7.9	-0.3	1.6	1.0	0.5
Spices, seasonings, condiments, sauces.....	0.359	9.5	0.7	-0.3	0.4	0.6
Salt and other seasonings and spices ^{2, 3}		4.3	1.0	1.7	-1.7	0.3
Olives, pickles, relishes ^{1, 2, 3}		13.0	-0.4	1.1	0.5	-0.4
Sauces and gravies ^{2, 3}		11.8	0.8	-0.1	0.4	1.1
Other condiments ³		15.7	4.1	-0.5	-2.0	5.6
Baby food and formula ^{1, 2}	0.039	10.1	1.2	-0.4	4.3	1.2
Other miscellaneous foods ²	0.635	8.5	-0.5	0.4	-0.2	0.0
Prepared salads ^{3, 4}		4.2	-3.1	1.4	-0.7	-2.1
Food away from home ¹	4.804	8.3	0.5	0.6	0.4	0.5
Full service meals and snacks ^{1, 2}	2.302	6.8	0.4	0.7	0.1	0.4
Limited service meals and snacks ^{1, 2}	2.236	8.0	0.5	0.5	0.6	0.5
Food at employee sites and schools ^{1, 2}	0.074	130.6	0.3	0.2	-0.1	0.3
Food at elementary and secondary schools ^{1, 3, 5}		294.0	-0.3	0.3	0.0	-0.3
Food from vending machines and mobile vendors ^{1, 2}	0.025	15.3	2.5	0.8	0.3	2.5
Other food away from home ^{1, 2}	0.167	7.1	0.1	0.7	1.2	0.1
Energy.....	6.978	-11.7	-1.2	-3.5	0.6	-3.6
Energy commodities.....	3.732	-20.4	-1.7	-4.6	2.7	-5.6
Fuel oil and other fuels.....	0.185	-28.6	-6.3	-2.5	0.0	-5.3
Fuel oil ¹	0.123	-37.0	-7.7	-4.0	-4.5	-7.7
Propane, kerosene, and firewood ⁶	0.062	-6.1	-3.4	-0.5	1.0	-1.2
Motor fuel.....	3.547	-20.0	-1.4	-4.7	2.8	-5.6
Gasoline (all types).....	3.459	-19.7	-1.4	-4.6	3.0	-5.6
Gasoline, unleaded regular ³		-20.3	-1.5	-3.3	3.4	-5.3
Gasoline, unleaded midgrade ^{3, 7}		-17.7	-0.9	-5.3	3.5	-5.1
Gasoline, unleaded premium ³		-15.6	-0.4	-5.2	2.4	-4.0
Other motor fuels ^{1, 2}	0.087	-26.2	-3.3	-4.9	-2.7	-3.3
Energy services.....	3.247	1.6	-0.8	-2.3	-1.7	-1.4
Electricity.....	2.511	5.9	-0.4	-0.7	-0.7	-1.0
Utility (piped) gas service.....	0.735	-11.0	-2.0	-7.1	-4.9	-2.6
All items less food and energy.....	79.586	5.3	0.4	0.4	0.4	0.4
Commodities less food and energy commodities.....	21.347	2.0	0.4	0.2	0.6	0.6
Household furnishings and supplies ⁸	4.393	4.1	-0.5	0.4	-0.4	-0.4
Window and floor coverings and other linens ²	0.311	2.2	-0.4	0.7	-1.7	0.2
Floor coverings ^{1, 2}	0.086	7.7	0.1	0.8	-0.2	0.1
Window coverings ^{1, 2}	0.072	-0.5	0.5	-0.5	-1.9	0.5
Other linens ²	0.153	0.5	-1.1	0.8	-2.2	-0.1
Furniture and bedding ¹	1.162	-0.5	-0.7	0.4	-0.5	-0.7
Bedroom furniture ¹	0.380	1.0	0.0	-0.8	0.7	0.0
Living room, kitchen, and dining room furniture ^{1, 2}	0.568	-0.2	-1.3	0.6	-0.4	-1.3
Other furniture ²	0.208	-4.0	-0.7	1.6	-3.6	-0.6
Appliances ²	0.288	-0.2	-0.6	0.7	-1.9	-0.3
Major appliances ²	0.104	-10.0	-1.9	-0.1	-3.4	-0.8
Laundry equipment ^{1, 3}		-1.7	-2.0	2.6	0.2	-2.0
Other appliances ^{1, 2}	0.182	5.8	0.1	0.7	-0.9	0.1
Other household equipment and furnishings ²	0.575	0.4	-1.1	0.4	-0.9	-0.6
Clocks, lamps, and decorator items ¹	0.323	1.7	-1.1	0.1	1.0	-1.1
Indoor plants and flowers ⁹	0.127	1.9	-1.3	1.8	-1.5	-2.2
Dishes and flatware ^{1, 2}	0.041	-2.7	-1.6	-2.1	-2.2	-1.6
Nonelectric cookware and tableware ²	0.084	-3.7	-0.4	-2.6	-1.7	-0.2
Tools, hardware, outdoor equipment and supplies ²	1.082	8.8	-0.5	0.2	0.0	-0.8
Tools, hardware and supplies ²	0.272	7.4	-0.8	0.4	-0.6	-0.5
Outdoor equipment and supplies ²	0.571	10.2	-0.3	0.3	0.3	-0.9

See footnotes at end of table.

Table 2. Consumer Price Index for All Urban Consumers (CPI-U): U.S. city average, by detailed expenditure category, May 2023 — Continued
 [1982-84=100, unless otherwise noted]

Expenditure category	Relative importance Apr. 2023	Unadjusted percent change		Seasonally adjusted percent change		
		May 2022- May 2023	Apr. 2023- May 2023	Feb. 2023- Mar. 2023	Mar. 2023- Apr. 2023	Apr. 2023- May 2023
Housekeeping supplies ¹	0.975	8.5	-0.1	0.5	0.8	-0.1
Household cleaning products ^{1, 2}	0.327	6.0	0.4	1.0	0.0	0.4
Household paper products ^{1, 2}	0.179	12.4	0.4	1.4	1.4	0.4
Miscellaneous household products ^{1, 2}	0.469	8.4	-0.7	-0.2	1.0	-0.7
Apparel.....	2.565	3.5	-0.3	0.3	0.3	0.3
Men's and boys' apparel.....	0.671	3.4	-0.1	1.0	0.5	0.3
Men's apparel.....	0.497	4.1	0.5	1.2	0.7	0.8
Men's suits, sport coats, and outerwear.....	0.067	-0.6	0.9	0.9	1.7	0.3
Men's underwear, nightwear, swimwear, and accessories ¹	0.178	4.8	1.3	-0.4	-0.8	1.3
Men's shirts and sweaters ²	0.120	2.2	-1.2	0.5	1.3	0.5
Men's pants and shorts.....	0.122	8.2	0.8	5.6	2.2	0.5
Boys' apparel.....	0.174	1.6	-1.7	0.2	0.1	-0.9
Women's and girls' apparel.....	1.054	4.6	-0.6	0.4	0.1	0.7
Women's apparel.....	0.876	4.2	-0.4	0.4	0.1	0.7
Women's outerwear.....	0.049	7.8	2.9	4.3	1.7	2.9
Women's dresses.....	0.097	2.1	-0.1	-1.3	-1.3	3.7
Women's suits and separates ²	0.395	4.8	-0.3	-0.4	0.3	1.5
Women's underwear, nightwear, swimwear, and accessories ²	0.323	3.6	-1.3	-0.5	-1.0	-1.3
Girls' apparel.....	0.178	6.8	-1.5	0.4	0.1	1.1
Footwear.....	0.507	0.2	-0.1	-0.5	0.4	0.0
Men's footwear ¹	0.179	-0.7	1.3	-1.6	-0.4	1.3
Boys' and girls' footwear.....	0.124	0.6	-1.7	2.9	0.8	-1.0
Women's footwear.....	0.204	0.9	-0.3	-1.0	-0.1	0.0
Infants' and toddlers' apparel.....	0.104	3.5	0.5	-0.3	0.1	-0.5
Jewelry and watches ⁶	0.229	6.8	-0.2	-0.3	0.1	-0.8
Watches ^{1, 6}	0.036	2.1	1.2	-4.2	0.9	1.2
Jewelry ⁶	0.193	7.8	-0.5	1.9	0.5	-1.3
Transportation commodities less motor fuel ⁸	7.681	0.1	1.3	0.0	1.5	1.5
New vehicles.....	4.278	4.7	0.2	0.4	-0.2	-0.1
New cars ³		4.2	0.1	0.6	-0.3	-0.4
New trucks ^{3, 10}		4.9	0.3	0.3	-0.2	-0.1
Used cars and trucks.....	2.673	-4.2	3.2	-0.9	4.4	4.4
Motor vehicle parts and equipment ¹	0.483	4.2	0.0	0.1	0.6	0.0
Tires ¹	0.327	3.3	0.6	-0.1	0.4	0.6
Vehicle accessories other than tires ^{1, 2}	0.155	5.8	-1.3	0.6	1.0	-1.3
Vehicle parts and equipment other than tires ^{1, 3}		4.6	-1.3	1.2	1.0	-1.3
Motor oil, coolant, and fluids ^{1, 3}		10.5	-1.0	0.7	2.6	-1.0
Medical care commodities ¹	1.456	4.4	0.6	0.6	0.5	0.6
Medicinal drugs ^{1, 8}	1.342	4.0	0.5	0.5	0.4	0.5
Prescription drugs ¹	0.948	3.1	0.1	0.1	0.3	0.1
Nonprescription drugs ^{1, 8}	0.394	6.2	1.5	1.5	0.8	1.5
Medical equipment and supplies ^{1, 8}	0.114	10.3	2.3	1.2	0.9	2.3
Recreation commodities ⁸	2.274	2.7	0.0	0.2	0.3	0.0
Video and audio products ⁸	0.279	-4.0	-0.5	-0.2	0.7	-0.8
Televisions.....	0.136	-11.5	-1.4	-1.0	0.3	-1.8
Other video equipment ²	0.017	-4.0	-1.9	3.4	1.3	-2.5
Audio equipment ¹	0.057	5.4	0.6	-0.4	1.1	0.6
Recorded music and music subscriptions ^{1, 2}	0.059	4.6	0.6	0.9	0.7	0.6
Pets and pet products ¹	0.675	10.6	1.0	0.8	1.1	1.0
Pet food ^{1, 2, 3}		13.8	0.8	1.6	1.4	0.8
Purchase of pets, pet supplies, accessories ^{1, 2, 3}		5.7	0.9	-0.3	0.3	0.9
Sporting goods ¹	0.746	-0.9	-1.1	-0.6	-0.3	-1.1

See footnotes at end of table.

Table 2. Consumer Price Index for All Urban Consumers (CPI-U): U.S. city average, by detailed expenditure category, May 2023 — Continued
 [1982-84=100, unless otherwise noted]

Expenditure category	Relative importance Apr. 2023	Unadjusted percent change		Seasonally adjusted percent change		
		May 2022- May 2023	Apr. 2023- May 2023	Feb. 2023- Mar. 2023	Mar. 2023- Apr. 2023	Apr. 2023- May 2023
Sports vehicles including bicycles ¹	0.431	-0.4	-1.3	-0.8	-0.7	-1.3
Sports equipment ¹	0.307	-1.5	-0.7	-0.4	0.3	-0.7
Photographic equipment and supplies.....	0.020	5.0	-0.2	1.0	-0.1	0.3
Photographic equipment ^{2, 3}		4.0	-0.5	0.8	0.0	0.1
Recreational reading materials ¹	0.112	2.9	1.4	0.9	-0.3	1.4
Newspapers and magazines ^{1, 2}	0.060	4.6	3.1	1.5	-1.7	3.1
Recreational books ^{1, 2}	0.052	0.9	-0.5	0.1	1.4	-0.5
Other recreational goods ²	0.441	2.1	0.1	0.9	0.0	0.2
Toys.....	0.352	1.7	0.1	0.7	-0.5	0.2
Toys, games, hobbies and playground equipment ^{2, 3}		3.5	0.6	0.9	0.6	1.3
Sewing machines, fabric and supplies ^{1, 2}	0.025	1.7	-0.9	2.8	7.2	-0.9
Music instruments and accessories ^{1, 2}	0.052	7.3	0.8	1.8	-0.1	0.8
Education and communication commodities ⁸	0.898	-6.9	-0.2	-0.5	-0.2	-0.2
Educational books and supplies ¹	0.094	-1.3	0.5	-1.4	-0.5	0.5
College textbooks ^{1, 3, 11}		-1.5	0.6	-1.2	-0.6	0.6
Information technology commodities ⁸	0.804	-7.6	-0.3	-0.4	-0.1	-0.3
Computers, peripherals, and smart home assistants ^{1, 4}	0.367	-4.2	-0.4	0.6	-1.3	-0.4
Computer software and accessories ^{1, 2}	0.023	-2.8	0.3	-0.5	-2.2	0.3
Telephone hardware, calculators, and other consumer information items ^{1, 2}	0.415	-11.0	-0.2	-1.3	1.1	-0.2
Smartphones ^{1, 3, 12}		-15.3	0.7	-2.6	0.5	0.7
Alcoholic beverages.....	0.836	4.8	0.5	0.1	0.5	0.5
Alcoholic beverages at home.....	0.505	3.9	0.3	-0.2	0.0	0.4
Beer, ale, and other malt beverages at home.....	0.194	6.1	0.4	-0.2	0.2	0.5
Distilled spirits at home ¹	0.086	1.6	0.2	-0.9	-0.1	0.2
Whiskey at home ^{1, 3}		1.1	0.2	0.0	0.5	0.2
Distilled spirits, excluding whiskey, at home ^{1, 3}		1.3	0.2	-1.0	-0.7	0.2
Wine at home ¹	0.226	2.9	0.4	0.1	0.2	0.4
Alcoholic beverages away from home ¹	0.331	6.3	0.7	0.3	1.1	0.7
Beer, ale, and other malt beverages away from home ^{1, 2, 3}		5.0	0.7	0.3	0.3	0.7
Wine away from home ^{1, 2, 3}		6.3	0.8	0.2	0.5	0.8
Distilled spirits away from home ^{1, 2, 3}		7.1	0.6	0.2	2.3	0.6
Other goods ⁸	1.243	6.6	0.6	0.5	0.2	0.6
Tobacco and smoking products ¹	0.496	6.3	0.6	0.8	0.1	0.6
Cigarettes ^{1, 2}	0.410	6.3	0.6	1.0	-0.3	0.6
Tobacco products other than cigarettes ^{1, 2}	0.079	6.0	0.4	-0.7	2.5	0.4
Personal care products ¹	0.599	7.5	1.0	0.8	0.5	1.0
Hair, dental, shaving, and miscellaneous personal care products ^{1, 2}	0.315	9.6	1.5	1.3	0.8	1.5
Cosmetics, perfume, bath, nail preparations and implements ¹	0.272	5.3	0.5	0.4	0.3	0.5
Miscellaneous personal goods ^{1, 2}	0.149	3.9	-1.1	-1.3	-0.5	-1.1
Stationery, stationery supplies, gift wrap ³		9.4	0.9	-1.1	-0.2	0.9
Services less energy services.....	58.238	6.6	0.4	0.4	0.4	0.4
Shelter.....	34.564	8.0	0.6	0.6	0.4	0.6
Rent of shelter ¹³	34.195	8.1	0.6	0.6	0.5	0.5
Rent of primary residence.....	7.542	8.7	0.5	0.5	0.6	0.5
Lodging away from home ²	1.221	3.4	2.6	2.7	-3.0	1.8
Housing at school, excluding board ¹³	0.159	3.0	0.0	0.2	0.2	0.1
Other lodging away from home including hotels and motels.....	1.061	3.7	3.0	3.1	-3.4	2.1
Owners' equivalent rent of residences ¹³	25.432	8.0	0.5	0.5	0.5	0.5

See footnotes at end of table.

Table 2. Consumer Price Index for All Urban Consumers (CPI-U): U.S. city average, by detailed expenditure category, May 2023 — Continued
 [1982-84=100, unless otherwise noted]

Expenditure category	Relative importance Apr. 2023	Unadjusted percent change		Seasonally adjusted percent change		
		May 2022- May 2023	Apr. 2023- May 2023	Feb. 2023- Mar. 2023	Mar. 2023- Apr. 2023	Apr. 2023- May 2023
Owners' equivalent rent of primary residence ¹³ ..	24.047	8.1	0.5	0.5	0.5	0.5
Tenants' and household insurance ^{1, 2}	0.370	1.6	0.1	0.0	0.5	0.1
Water and sewer and trash collection services ²	1.058	5.7	0.4	0.3	0.3	0.6
Water and sewerage maintenance.....	0.757	4.9	0.1	0.3	0.2	0.3
Garbage and trash collection ^{1, 10}	0.301	7.9	1.3	0.2	0.6	1.3
Household operations ^{1, 2}	0.892	4.6	-1.2			-1.2
Domestic services ^{1, 2}	0.272	6.5	-2.0	0.0	6.9	-2.0
Gardening and lawncare services ^{1, 2}						
Moving, storage, freight expense ^{1, 2}	0.103	-0.9	1.8	1.5	1.0	1.8
Repair of household items ^{1, 2}	0.116					
Medical care services.....	6.423	-0.1	-0.1	-0.5	-0.1	-0.1
Professional services.....	3.535	2.0	0.0	0.0	0.1	0.0
Physicians' services ¹	1.799	-0.1	-0.5	-0.2	0.0	-0.5
Dental services.....	0.910	6.6	0.1	0.3	0.2	0.1
Eyeglasses and eye care ^{1, 6}	0.308	1.7	0.5	0.1	-0.1	0.5
Services by other medical professionals ^{1, 6}	0.518	0.8	1.2	0.4	0.2	1.2
Hospital and related services ¹	2.245	3.9	0.8	-0.2	0.4	0.8
Hospital services ^{1, 14}	1.909	3.7	1.0	-0.4	0.5	1.0
Inpatient hospital services ^{1, 14, 3}		3.4	1.0	-0.7	0.6	1.0
Outpatient hospital services ^{1, 3, 6}		4.9	0.9	0.9	0.4	0.9
Nursing homes and adult day services ¹⁴	0.188	4.8	-0.8	0.4	-0.3	-0.8
Care of invalids and elderly at home ^{1, 5}	0.149	6.0	-0.1	1.0	0.4	-0.1
Health insurance ^{1, 5}	0.642	-20.5	-3.7	-4.2	-3.8	-3.7
Transportation services.....	5.884	10.2	0.8	1.4	-0.2	0.8
Leased cars and trucks ^{1, 11}	0.753		-1.6		-0.8	-1.6
Car and truck rental ²	0.122	-12.4	-2.1	-3.8	-3.2	-3.3
Motor vehicle maintenance and repair ¹	1.106	13.5	0.6	0.3	0.5	0.6
Motor vehicle body work ¹	0.058	7.2	-0.5			-0.5
Motor vehicle maintenance and servicing ¹	0.569	9.9	1.0	0.4	-0.3	1.0
Motor vehicle repair ^{1, 2}	0.423	19.7	0.3	0.2	1.7	0.3
Motor vehicle insurance.....	2.591	17.1	1.7	1.2	1.4	2.0
Motor vehicle fees ^{1, 2}	0.491	3.0	0.0	-0.3	0.1	0.0
State motor vehicle registration and license fees ^{1, 2}	0.276	3.3	-0.1	0.1	0.0	-0.1
Parking and other fees ^{1, 2}	0.194	2.6	0.3	-0.8	0.2	0.3
Parking fees and tolls ^{2, 3}		2.5	0.3	0.4	0.6	-0.1
Public transportation.....	0.822	-8.9	1.1	3.2	-5.0	0.9
Airline fares.....	0.630	-13.4	1.3	4.0	-2.6	-3.0
Other intercity transportation.....	0.048	2.1	2.0	-0.8	-1.4	1.4
Ship fare ^{1, 2, 3}		2.6	2.7	0.3	0.8	2.7
Intracity transportation ¹	0.140	-0.9	-0.5	0.2	0.5	-0.5
Intracity mass transit ^{1, 3, 8}		0.2	0.0	0.0	0.0	0.0
Recreation services ⁸	3.120	5.8	-0.1	0.0	0.7	-0.1
Video and audio services ⁸	1.004	4.5	0.1	0.9	0.6	0.1
Cable, satellite, and live streaming television service ¹⁰	0.889	4.5	-0.1	1.2	0.6	0.0
Purchase, subscription, and rental of video ^{1, 2}	0.115	5.6	1.4	-1.2	0.6	1.4
Video discs and other media ^{1, 2, 3}		7.8	6.8	-4.0	2.1	6.8
Subscription and rental of video and video games ^{1, 2, 3}		5.1	-0.6	-0.5	1.2	-0.6
Pet services including veterinary ²	0.561	10.2	-0.6	0.5	2.7	-0.6
Pet services ^{1, 2, 3}		5.6	-0.3	0.8	0.1	-0.3
Veterinarian services ^{2, 3}		11.0	-0.2	0.8	3.2	-0.1
Photographers and photo processing ^{1, 2}	0.039	4.4	0.3	-1.0	-0.1	0.3

See footnotes at end of table.

Table 2. Consumer Price Index for All Urban Consumers (CPI-U): U.S. city average, by detailed expenditure category, May 2023 — Continued
 [1982-84=100, unless otherwise noted]

Expenditure category	Relative importance Apr. 2023	Unadjusted percent change		Seasonally adjusted percent change		
		May 2022- May 2023	Apr. 2023- May 2023	Feb. 2023- Mar. 2023	Mar. 2023- Apr. 2023	Apr. 2023- May 2023
Other recreation services ²	1.515	5.5	-0.1	-0.7	0.2	-0.1
Club membership for shopping clubs, fraternal, or other organizations, or participant sports fees ^{1, 2} ..	0.668	4.3	0.3	-0.4	0.1	0.3
Admissions ¹	0.424	4.6	-0.7	-1.6	-1.6	-0.7
Admission to movies, theaters, and concerts ^{1, 2, 3}		6.6	-0.3	1.1	1.4	-0.3
Admission to sporting events ^{1, 2, 3}		0.6	-3.7	-3.9	-7.8	-3.7
Fees for lessons or instructions ^{1, 6}	0.190	12.2	0.1	-0.2	5.0	0.1
Education and communication services ⁸	4.841	2.8	-0.2	0.3	0.1	-0.2
Tuition, other school fees, and childcare.....	2.142	3.6	0.1	0.6	0.3	0.1
College tuition and fees.....	1.170	2.3	0.0	0.2	0.2	0.2
Elementary and high school tuition and fees.....	0.301	3.6	1.2	0.3	0.1	0.7
Day care and preschool ⁹	0.569	6.4	-0.4	1.4	0.7	-0.3
Technical and business school tuition and fees ^{1, 2} ..	0.026	2.2	0.1	0.0	0.1	0.1
Postage and delivery services ²	0.074	6.3	-0.2	0.1	0.2	0.1
Postage.....	0.063	6.7	0.0	0.3	0.3	0.4
Delivery services ²	0.011	3.1	-1.7	-1.4	-0.6	-1.5
Telephone services ^{1, 2}	1.647	1.4	-0.5	-0.4	0.0	-0.5
Wireless telephone services ^{1, 2}	1.403	0.6	-0.6	-0.4	0.0	-0.6
Residential telephone services ^{1, 8}	0.244	5.8	-0.3	-0.3	0.1	-0.3
Internet services and electronic information providers ^{1, 2}	0.972	2.9	0.0	0.9	-0.3	0.0
Other personal services ^{1, 8}	1.455	6.7	0.5	0.5	1.5	0.5
Personal care services ¹	0.602	4.9	0.2	0.2	0.3	0.2
Haircuts and other personal care services ^{1, 2}	0.602	4.9	0.2	0.2	0.3	0.2
Miscellaneous personal services ¹	0.854	8.0	0.7	0.7	2.4	0.7
Legal services ^{1, 6}	0.247	7.3		0.2		
Funeral expenses ^{1, 6}	0.168	5.3	0.4	0.5	0.3	0.4
Laundry and dry cleaning services ^{1, 2}	0.142	7.3	1.0	0.2	0.5	1.0
Apparel services other than laundry and dry cleaning ^{1, 2}	0.027	14.3	1.9	0.4	0.2	1.9
Financial services ^{1, 6}	0.190	10.9	0.5	1.8	4.1	0.5
Checking account and other bank services ^{1, 2, 3} ..		0.1	0.0	0.1	0.0	0.0
Tax return preparation and other accounting fees ^{1, 2, 3}			0.7	2.4	6.4	0.7

¹ Not seasonally adjusted.

² Indexes on a December 1997=100 base.

³ Special index based on a substantially smaller sample.

⁴ Indexes on a December 2007=100 base.

⁵ Indexes on a December 2005=100 base.

⁶ Indexes on a December 1986=100 base.

⁷ Indexes on a December 1993=100 base.

⁸ Indexes on a December 2009=100 base.

⁹ Indexes on a December 1990=100 base.

¹⁰ Indexes on a December 1983=100 base.

¹¹ Indexes on a December 2001=100 base.

¹² Indexes on a December 2019=100 base.

¹³ Indexes on a December 1982=100 base.

¹⁴ Indexes on a December 1996=100 base.

Table 3. Consumer Price Index for All Urban Consumers (CPI-U): U.S. city average, special aggregate indexes, May 2023

[1982-84=100, unless otherwise noted]

Special aggregate indexes	Relative importance Apr. 2023	Unadjusted indexes			Unadjusted percent change		Seasonally adjusted percent change		
		May 2022	Apr. 2023	May 2023	May 2022-May 2023	Apr. 2023-May 2023	Feb. 2023-Mar. 2023	Mar. 2023-Apr. 2023	Apr. 2023-May 2023
All items less food.....	86.564	290.760	300.552	301.327	3.6	0.3	0.1	0.4	0.1
All items less shelter.....	65.436	272.550	278.101	278.336	2.1	0.1	-0.2	0.3	-0.1
All items less food and shelter.....	51.999	264.868	267.358	267.496	1.0	0.1	-0.3	0.4	-0.2
All items less food, shelter, and energy.....	45.021	260.146	268.292	268.970	3.4	0.3	0.3	0.4	0.3
All items less food, shelter, energy, and used cars and trucks.....	42.348	261.361	272.145	272.328	4.2	0.1	0.3	0.2	0.1
All items less medical care.....	92.122	280.207	291.585	292.373	4.3	0.3	0.1	0.4	0.1
All items less energy.....	93.022	293.092	308.189	309.312	5.5	0.4	0.3	0.4	0.4
Commodities.....	38.515	223.076	224.216	224.515	0.6	0.1	-0.3	0.6	-0.2
Commodities less food, energy, and used cars and trucks.....	18.674	159.204	165.056	165.049	3.7	0.0	0.3	0.0	0.0
Commodities less food.....	25.079	187.042	182.309	182.475	-2.4	0.1	-0.5	0.9	-0.3
Commodities less food and beverages.....	24.243	183.797	178.713	178.852	-2.7	0.1	-0.6	0.9	-0.4
Services.....	61.485	359.566	380.990	382.233	6.3	0.3	0.3	0.2	0.3
Services less rent of shelter ¹	27.290	380.099	395.889	395.956	4.2	0.0	0.0	0.1	-0.2
Services less medical care services.....	55.062	341.776	364.698	366.070	7.1	0.4	0.4	0.4	0.3
Durables.....	12.547	128.122	127.406	128.059	0.0	0.5	0.4	0.8	0.3
Nondurables.....	25.968	271.921	274.743	274.606	1.0	0.0	-0.6	0.5	-0.6
Nondurables less food.....	12.532	246.034	235.504	234.724	-4.6	-0.3	-2.1	1.4	-1.4
Nondurables less food and beverages.....	11.696	244.396	232.501	231.597	-5.2	-0.4	-2.3	1.5	-1.5
Nondurables less food, beverages, and apparel.....	9.130	322.565	300.265	299.013	-7.3	-0.4	-2.8	1.8	-2.0
Nondurables less food and apparel.....	9.966	316.375	297.250	296.231	-6.4	-0.3	-2.5	1.7	-1.8
Housing.....	44.339	297.868	317.278	318.205	6.8	0.3	0.3	0.2	0.2
Education and communication ²	5.739	143.108	145.449	145.205	1.5	-0.2	0.2	0.0	-0.2
Education ²	2.236	279.356	288.606	288.843	3.4	0.1	0.5	0.2	0.1
Communication ²	3.503	75.341	75.662	75.415	0.1	-0.3	0.0	-0.1	-0.3
Information and information processing ²	3.430	71.053	71.256	71.022	0.0	-0.3	0.0	-0.1	-0.3
Information technology, hardware and services ³	1.783	7.250	7.130	7.120	-1.8	-0.1	0.3	-0.2	-0.1
Recreation ²	5.395	130.360	136.375	136.280	4.5	-0.1	0.1	0.5	-0.1
Video and audio ²	1.283	113.457	116.545	116.495	2.7	0.0	0.7	0.6	-0.1
Pets, pet products and services ²	1.237	199.268	219.264	219.876	10.3	0.3	0.7	1.8	0.3
Photography ²	0.061	80.455	84.137	84.267	4.7	0.2	-0.4	-0.1	0.3
Food and beverages.....	14.272	300.081	319.085	319.811	6.6	0.2	0.0	0.1	0.2
Domestically produced farm food.....	7.213	295.893	312.634	312.861	5.7	0.1	-0.2	0.2	0.1
Other services.....	9.417	386.219	403.162	402.996	4.3	0.0	0.2	0.5	0.0
Apparel less footwear.....	2.058	118.220	123.785	123.366	4.4	-0.3	0.5	0.2	0.4
Fuels and utilities.....	4.490	295.153	299.962	297.818	0.9	-0.7	-1.7	-1.1	-1.1
Household energy.....	3.432	250.594	251.991	249.289	-0.5	-1.1	-2.3	-1.6	-1.6
Medical care.....	7.878	543.488	547.219	547.420	0.7	0.0	-0.3	0.0	0.1
Transportation.....	17.112	274.282	267.402	268.862	-2.0	0.5	-0.5	1.2	-0.2
Private transportation.....	16.290	271.545	265.893	267.275	-1.6	0.5	-0.7	1.5	-0.2
New and used motor vehicles ²	8.073	127.847	128.294	129.619	1.4	1.0	0.2	1.2	1.2
Utilities and public transportation.....	7.662	250.991	254.346	253.643	1.1	-0.3	-0.8	-1.0	-1.1
Household furnishings and operations.....	5.285	142.736	149.650	148.667	4.2	-0.7	0.4	0.2	-0.6
Other goods and services.....	2.698	502.966	533.706	536.518	6.7	0.5	0.5	0.9	0.5
Personal care.....	2.203	256.147	272.037	273.439	6.8	0.5	0.4	1.1	0.5

¹ Indexes on a December 1982=100 base.

² Indexes on a December 1997=100 base.

³ Indexes on a December 1988=100 base.

Table 4. Consumer Price Index for All Urban Consumers (CPI-U): Selected areas, all items index, May 2023
 [1982-84=100, unless otherwise noted]

Area	Pricing Schedule ¹	Percent change to May 2023 from:			Percent change to Apr. 2023 from:		
		May 2022	Mar. 2023	Apr. 2023	Apr. 2022	Feb. 2023	Mar. 2023
U.S. city average.....	M	4.0	0.8	0.3	4.9	0.8	0.5
Region and area size²							
Northeast.....	M	3.1	0.3	0.1	3.8	0.0	0.2
Northeast - Size Class A.....	M	3.6	0.3	0.2	4.1	0.0	0.1
Northeast - Size Class B/C ³	M	2.3	0.3	0.0	3.5	-0.1	0.3
New England ⁴	M	2.4	0.1	-0.2	3.8	0.3	0.3
Middle Atlantic ⁴	M	3.3	0.4	0.3	3.9	-0.2	0.2
Midwest.....	M	3.7	0.8	0.3	4.9	1.2	0.6
Midwest - Size Class A.....	M	3.6	1.1	0.4	4.7	1.3	0.7
Midwest - Size Class B/C ³	M	3.7	0.7	0.2	5.1	1.1	0.5
East North Central ⁴	M	4.0	1.0	0.3	5.4	1.4	0.6
West North Central ⁴	M	2.8	0.5	0.1	4.0	0.6	0.4
South.....	M	4.4	0.9	0.2	5.5	1.0	0.7
South - Size Class A.....	M	4.6	1.0	0.4	5.5	1.1	0.6
South - Size Class B/C ³	M	4.4	0.8	0.1	5.5	1.0	0.7
South Atlantic ⁴	M	5.0	0.9	0.2	6.0	1.1	0.7
East South Central ⁴	M	4.5	1.1	0.4	5.2	0.9	0.6
West South Central ⁴	M	3.3	0.7	0.0	4.8	0.9	0.7
West.....	M	4.5	0.9	0.4	4.9	1.0	0.5
West - Size Class A.....	M	4.5	0.9	0.4	5.0	0.8	0.5
West - Size Class B/C ³	M	4.4	0.8	0.4	4.8	1.1	0.4
Mountain ⁴	M	5.1	0.5	0.2	5.6	1.1	0.3
Pacific ⁴	M	4.3	1.0	0.5	4.6	0.9	0.5
Size classes							
Size Class A ⁵	M	4.2	0.8	0.4	4.9	0.8	0.5
Size Class B/C ³	M	3.9	0.7	0.2	5.0	0.9	0.5
Selected local areas							
Chicago-Naperville-Elgin, IL-IN-WI.....	M	3.3	1.1	0.4	4.8	1.6	0.8
Los Angeles-Long Beach-Anaheim, CA.....	M	3.2	0.8	0.1	3.8	0.8	0.7
New York-Newark-Jersey City, NY-NJ-PA.....	M	3.5	0.3	0.2	3.7	0.0	0.1
Atlanta-Sandy Springs-Roswell, GA.....	2				5.8	0.5	
Baltimore-Columbia-Towson, MD ⁶	2				5.3	0.7	
Detroit-Warren-Dearborn, MI.....	2				6.6	2.1	
Houston-The Woodlands-Sugar Land, TX.....	2				4.0	1.3	
Miami-Fort Lauderdale-West Palm Beach, FL.....	2				9.0	1.4	
Philadelphia-Camden-Wilmington, PA-NJ-DE-MD.....	2				4.7	0.1	
Phoenix-Mesa-Scottsdale, AZ ⁷	2				7.4	1.5	
San Francisco-Oakland-Hayward, CA.....	2				4.2	0.4	
Seattle-Tacoma-Bellevue, WA.....	2				6.9	1.0	
St. Louis, MO-IL.....	2				4.2	0.6	
Urban Alaska.....	2				3.1	0.8	
Boston-Cambridge-Newton, MA-NH.....	1	3.6	0.0				
Dallas-Fort Worth-Arlington, TX.....	1	4.7	0.8				
Denver-Aurora-Lakewood, CO.....	1	5.1	0.8				
Minneapolis-St.Paul-Bloomington, MN-WI.....	1	1.8	0.4				
Riverside-San Bernardino-Ontario, CA ⁴	1	3.9	0.8				
San Diego-Carlsbad, CA.....	1	5.2	0.9				
Tampa-St. Petersburg-Clearwater, FL ⁸	1	7.3	1.7				
Urban Hawaii.....	1	2.0	0.3				
Washington-Arlington-Alexandria, DC-VA-MD-WV ⁶	1	3.1	0.9				

¹ Foods, fuels, and several other items are priced every month in all areas. Most other goods and services are priced as indicated: M - Every month. 1 - January, March, May, July, September, and November. 2 - February, April, June, August, October, and December.

² Regions defined as the four Census regions.

³ Indexes on a December 1996=100 base.

⁴ Indexes on a December 2017=100 base.

⁵ Indexes on a December 1986=100 base.

⁶ 1998 - 2017 indexes based on substantially smaller sample.

⁷ Indexes on a December 2001=100 base.

⁸ Indexes on a 1987=100 base.

NOTE: Local area indexes are byproducts of the national CPI program. Each local index has a smaller sample size than the national index and is, therefore, subject to substantially more sampling and other measurement error. As a result, local area indexes show greater volatility than the national index, although their long-term trends are similar. Therefore, the Bureau of Labor Statistics strongly urges users to consider adopting the national average CPI for use in their escalator clauses.

Table 5. Chained Consumer Price Index for All Urban Consumers (C-CPI-U) and the Consumer Price Index for All Urban Consumers (CPI-U): U.S. city average, all items index, May 2023
 [Percent changes]

Month Year	Unadjusted 1-month percent change		Unadjusted 12-month percent change	
	C-CPI-U ¹	CPI-U	C-CPI-U ¹	CPI-U
December 2010.....			1.3	1.5
December 2011.....			2.9	3.0
December 2012.....			1.5	1.7
December 2013.....			1.3	1.5
December 2014.....			0.5	0.8
December 2015.....			0.4	0.7
December 2016.....			1.8	2.1
December 2017.....			1.7	2.1
December 2018.....			1.5	1.9
December 2019.....			1.8	2.3
December 2020.....			1.5	1.4
January 2021.....	0.5	0.4	1.6	1.4
February 2021.....	0.5	0.5	1.8	1.7
March 2021.....	0.6	0.7	2.6	2.6
April 2021.....	0.8	0.8	4.0	4.2
May 2021.....	0.7	0.8	4.9	5.0
June 2021.....	0.8	0.9	5.1	5.4
July 2021.....	0.5	0.5	5.0	5.4
August 2021.....	0.1	0.2	4.8	5.3
September 2021.....	0.3	0.3	5.0	5.4
October 2021.....	0.7	0.8	5.8	6.2
November 2021.....	0.4	0.5	6.4	6.8
December 2021.....	0.2	0.3	6.5	7.0
January 2022.....	0.8	0.8	6.8	7.5
February 2022.....	0.9	0.9	7.3	7.9
March 2022.....	1.4	1.3	8.1	8.5
April 2022.....	0.6	0.6	7.9	8.3
May 2022.....	1.1	1.1	8.3	8.6
June 2022.....	1.2	1.4	8.7	9.1
July 2022.....	0.1	0.0	8.3	8.5
August 2022.....	0.1	0.0	8.2	8.3
September 2022.....	0.3	0.2	8.3	8.2
October 2022.....	0.4	0.4	7.9	7.7
November 2022.....	-0.1	-0.1	7.4	7.1
December 2022.....	-0.2	-0.3	6.8	6.5
January 2023.....	0.8	0.8	6.8	6.4
February 2023.....	0.6	0.6	6.4	6.0
March 2023.....	0.3	0.3	5.3	5.0
April 2023.....	0.5	0.5	5.2	4.9
May 2023.....	0.2	0.3	4.3	4.0

¹ The C-CPI-U is designed to be a closer approximation to a cost-of-living index in that it, in its final form, accounts for any substitution that consumers make across item categories in response to changes in relative prices. Since the expenditure data required for the calculation of the C-CPI-U are available only with a time lag, the C-CPI-U is issued first in preliminary form using the latest available expenditure data at that time and is subject to four revisions.

Indexes are issued as initial estimates. Indexes are revised each quarter with the publication of January, April, July, and October data as updated expenditure estimates become available. The C-CPI-U indexes are updated quarterly until they become final. January-March indexes are final in January of the following year; April-June indexes are final in April of the following year; July-September indexes are final in July of the following year; October-December indexes are final in October of the following year.

Table 6. Consumer Price Index for All Urban Consumers (CPI-U): U.S. city average, by expenditure category, May 2023, 1-month analysis table
 [1982-84=100, unless otherwise noted]

Expenditure category	Relative importance Apr. 2023	One Month				
		Seasonally adjusted percent change Apr. 2023-May 2023	Seasonally adjusted effect on All Items Apr. 2023-May 2023 ¹	Standard error, median price change ²	Largest (L) or Smallest (S) seasonally adjusted change since: ³	
					Date	Percent change
All items.....	100.000	0.1		0.04	S-Mar.2023	0.1
Food.....	13.436	0.2	0.027	0.09	L-Feb.2023	0.4
Food at home.....	8.632	0.1	0.005	0.13	L-Feb.2023	0.3
Cereals and bakery products.....	1.168	0.0	0.000	0.28	S-Jun.2021	-0.2
Cereals and cereal products.....	0.365	-0.6	-0.002	0.45	S-Aug.2020	-0.6
Flour and prepared flour mixes.....	0.061	0.0	0.000	0.99	S-Mar.2023	0.0
Breakfast cereal ⁴	0.146	0.0	0.000	0.86	S-Feb.2023	-1.1
Rice, pasta, cornmeal.....	0.159	-1.2	-0.002	0.59	S-Dec.2019	-1.7
Rice ^{4, 5, 6}		-0.2		0.80	S-Feb.2023	-0.5
Bakery products ⁴	0.803	0.2	0.001	0.37	L-Mar.2023	0.7
Bread ^{4, 5}	0.224	0.4	0.001	0.56	L-Mar.2023	0.4
White bread ^{4, 6}		-0.2		0.85	S-Dec.2021	-0.5
Bread other than white ^{4, 6}		0.8		0.78	L-Feb.2023	1.7
Fresh biscuits, rolls, muffins ⁵	0.119	-1.1	-0.001	0.87	S-Aug.2021	-1.7
Cakes, cupcakes, and cookies ⁴	0.208	0.2	0.000	0.66	L-Mar.2023	0.7
Cookies ^{4, 6}		-0.5		0.89	S-Nov.2021	-0.5
Fresh cakes and cupcakes ^{4, 6}		0.9		1.29	L-Jan.2023	1.1
Other bakery products.....	0.252	0.3	0.001	0.79	L-Mar.2023	1.9
Fresh sweetrolls, coffeecakes, doughnuts ^{4, 6}		-0.3		0.99	-	-
Crackers, bread, and cracker products ⁶		0.5		1.05	L-Mar.2023	1.3
Frozen and refrigerated bakery products, pies, tarts, turnovers ⁶		0.1		1.31	L-Mar.2023	2.8
Meats, poultry, fish, and eggs.....	1.799	-1.2	-0.022	0.27	S-Mar.2023	-1.4
Meats, poultry, and fish.....	1.654	-0.1	-0.002	0.28	L-Feb.2023	0.6
Meats.....	1.023	0.2	0.002	0.34	L-Feb.2023	0.5
Beef and veal.....	0.440	1.0	0.004	0.54	L-Jan.2023	1.1
Uncooked ground beef ⁴	0.156	2.0	0.003	0.67	L-Mar.2022	2.1
Uncooked beef roasts ⁵	0.057	1.2	0.001	1.57	S-Mar.2023	-2.3
Uncooked beef steaks ⁵	0.184	0.1	0.000	0.83	S-Oct.2022	-0.3
Uncooked other beef and veal ^{4, 5}	0.043	-0.9	0.000	0.91	S-Feb.2023	-1.2
Pork.....	0.328	-0.8	-0.003	0.56	L-Feb.2023	0.7
Bacon, breakfast sausage, and related products ⁵	0.140	-0.9	-0.001	0.80	L-Mar.2023	0.3
Bacon and related products ⁶		-1.3		0.98	L-Mar.2023	1.0
Breakfast sausage and related products ^{5, 6}		-0.7		1.08	L-Feb.2023	1.4
Ham.....	0.067	1.6	0.001	1.28	S-Mar.2023	-4.8
Ham, excluding canned ⁶		1.6		1.75	-	-
Pork chops ⁴	0.044	-1.5	-0.001	1.25	S-Jan.2023	-3.5
Other pork including roasts, steaks, and ribs ⁵	0.077	-2.5	-0.002	1.18	S-Dec.2021	-3.2
Other meats.....	0.255	0.2	0.000	0.54	L-Mar.2023	0.9
Frankfurters ⁶		0.8		1.63	L-Feb.2023	1.6
Lunchmeats ^{4, 5, 6}		-0.4		0.57	S-Jan.2023	-1.7
Poultry ⁴	0.345	0.2	0.001	0.60	S-Mar.2023	-0.4
Chicken ^{4, 5}	0.276	0.3	0.001	0.71	S-Mar.2023	-0.6
Fresh whole chicken ^{4, 6}		1.9		0.98	L-Jul.2022	1.9
Fresh and frozen chicken parts ^{4, 6}		-0.5		0.87	S-Jan.2023	-1.0
Other uncooked poultry including turkey ⁵	0.070	-2.0	-0.001	1.16	S-Sep.2021	-3.0
Fish and seafood.....	0.285	-1.6	-0.004	0.62	S-Aug.2002	-2.1
Fresh fish and seafood ^{4, 5}	0.140	-0.9	-0.001	0.84	S-Dec.2022	-1.0
Processed fish and seafood ⁵	0.146	-2.0	-0.003	0.89	S-Feb.2018	-2.0
Shelf stable fish and seafood ⁶		-1.7		1.31	-	-
Frozen fish and seafood ⁶		-2.2		1.04	S-Oct.2016	-2.3

See footnotes at end of table.

Table 6. Consumer Price Index for All Urban Consumers (CPI-U): U.S. city average, by expenditure category, May 2023, 1-month analysis table — Continued
 [1982-84=100, unless otherwise noted]

Expenditure category	Relative importance Apr. 2023	One Month				
		Seasonally adjusted percent change Apr. 2023-May 2023	Seasonally adjusted effect on All Items Apr. 2023-May 2023 ¹	Standard error, median price change ²	Largest (L) or Smallest (S) seasonally adjusted change since: ³	
					Date	Percent change
Eggs ⁴	0.145	-13.8	-0.020	0.83	S-Jan.1951	-17.5
Dairy and related products.....	0.799	-1.1	-0.009	0.32	S-Jan.2015	-1.2
Milk ⁵	0.195	-0.6	-0.001	0.47	L-Feb.2023	0.2
Fresh whole milk ⁶		-1.0		0.62	L-Feb.2023	0.0
Fresh milk other than whole ^{5, 6}		-0.5		0.51	L-Feb.2023	0.1
Cheese and related products ⁴	0.246	-0.4	-0.001	0.53	S-Oct.2022	-0.5
Ice cream and related products.....	0.122	-0.2	0.000	0.86	L-Mar.2023	1.2
Other dairy and related products ⁵	0.237	-1.3	-0.003	0.69	S-Mar.2021	-1.4
Fruits and vegetables.....	1.467	1.3	0.019	0.38	L-Sep.2022	1.3
Fresh fruits and vegetables.....	1.091	1.4	0.015	0.46	L-Feb.2022	2.2
Fresh fruits.....	0.587	1.5	0.009	0.65	L-Feb.2022	3.0
Apples.....	0.085	1.9	0.002	1.14	L-Jan.2023	1.9
Bananas ⁴	0.090	-0.1	0.000	0.60	S-Mar.2023	-1.5
Citrus fruits ⁵	0.175	-1.1	-0.002	1.19	L-Mar.2023	-0.3
Oranges, including tangerines ⁶		-0.4		1.53	L-Mar.2023	0.5
Other fresh fruits ⁵	0.237	3.4	0.008	1.15	L-Aug.2020	4.1
Fresh vegetables.....	0.503	1.3	0.006	0.47	L-Sep.2022	1.8
Potatoes.....	0.087	0.2	0.000	0.97	L-Feb.2023	2.8
Lettuce.....	0.071	5.3	0.004	1.22	L-Jul.2019	6.7
Tomatoes.....	0.079	0.7	0.001	1.08	L-Feb.2023	2.0
Other fresh vegetables.....	0.266	1.0	0.003	0.65	L-Sep.2022	1.3
Processed fruits and vegetables ⁵	0.376	1.0	0.004	0.45	L-Feb.2023	1.2
Canned fruits and vegetables ⁵	0.192	0.2	0.000	0.73	L-Feb.2023	0.2
Canned fruits ^{5, 6}		0.9		0.82	L-Feb.2023	0.9
Canned vegetables ^{5, 6}		0.1		0.83	L-Dec.2022	0.3
Frozen fruits and vegetables ⁵	0.110	1.9	0.002	0.72	L-Feb.2023	4.5
Frozen vegetables ⁶		1.4		0.99	L-Feb.2023	4.8
Other processed fruits and vegetables including dried ⁵	0.075	2.1	0.002	0.70	L-Jan.2023	2.5
Dried beans, peas, and lentils ^{4, 5, 6}		2.3		0.82	L-Dec.2022	3.2
Nonalcoholic beverages and beverage materials.....	1.043	0.7	0.008	0.40	L-Feb.2023	1.0
Juices and nonalcoholic drinks ⁵	0.734	1.0	0.008	0.47	L-Feb.2023	1.0
Carbonated drinks.....	0.309	-0.1	0.000	0.84	S-Feb.2023	-0.1
Frozen noncarbonated juices and drinks ^{4, 5}	0.008	7.4	0.001	0.97	L-EVER	-
Nonfrozen noncarbonated juices and drinks ⁵	0.417	1.7	0.007	0.56	L-Feb.2023	1.8
Beverage materials including coffee and tea ⁵	0.309	0.1	0.000	0.69	L-Feb.2023	0.5
Coffee.....	0.198	0.1	0.000	0.93	L-Feb.2023	0.3
Roasted coffee ⁶		-0.4		1.09	L-Mar.2023	0.0
Instant coffee ^{4, 6}		0.6		1.03	L-Feb.2023	1.1
Other beverage materials including tea ^{4, 5}	0.111	-0.1	0.000	0.76	-	-
Other food at home.....	2.354	0.4	0.008	0.23	L-Mar.2023	0.4
Sugar and sweets ⁴	0.302	0.4	0.001	0.49	L-Feb.2023	0.5
Sugar and sugar substitutes.....	0.041	0.5	0.000	0.62	L-Feb.2023	2.1
Candy and chewing gum ^{4, 5}	0.191	0.3	0.001	0.72	S-Mar.2023	0.0
Other sweets ⁵	0.070	0.2	0.000	0.82	L-Feb.2023	1.5
Fats and oils.....	0.256	0.2	0.001	0.60	L-Feb.2023	0.4
Butter and margarine ⁵	0.081	0.1	0.000	1.08	L-Dec.2022	2.0
Butter ⁶		-1.0		1.34	S-Mar.2023	-6.0
Margarine ^{4, 6}		2.1		1.88	L-Sep.2022	4.2
Salad dressing ⁵	0.061	0.2	0.000	1.21	L-Mar.2023	0.7
Other fats and oils including peanut butter ⁵	0.115	0.6	0.001	0.86	L-Feb.2023	1.2
Peanut butter ^{4, 5, 6}		-0.9		0.92	S-Mar.2023	-2.3
Other foods.....	1.796	0.4	0.007	0.27	L-Mar.2023	0.7

See footnotes at end of table.

Table 6. Consumer Price Index for All Urban Consumers (CPI-U): U.S. city average, by expenditure category, May 2023, 1-month analysis table — Continued
 [1982-84=100, unless otherwise noted]

Expenditure category	Relative importance Apr. 2023	One Month				
		Seasonally adjusted percent change Apr. 2023-May 2023	Seasonally adjusted effect on All Items Apr. 2023-May 2023 ¹	Standard error, median price change ²	Largest (L) or Smallest (S) seasonally adjusted change since: ³	
					Date	Percent change
Soups.....	0.107	0.6	0.001	1.22	L-Jan.2023	1.8
Frozen and freeze dried prepared foods.....	0.274	0.3	0.001	0.56	L-Mar.2023	1.6
Snacks.....	0.382	0.5	0.002	0.62	S-Feb.2023	-0.9
Spices, seasonings, condiments, sauces.....	0.359	0.6	0.002	0.48	L-Feb.2023	1.3
Salt and other seasonings and spices ^{5, 6}		0.3		0.91	L-Mar.2023	1.7
Olives, pickles, relishes ^{4, 5, 6}		-0.4		1.19	S-Sep.2022	-0.6
Sauces and gravies ^{5, 6}		1.1		0.76	L-Feb.2023	2.2
Other condiments ⁶		5.6		1.27	L-Jan.2023	6.2
Baby food and formula ^{4, 5}	0.039	1.2	0.000	1.03	S-Mar.2023	-0.4
Other miscellaneous foods ⁵	0.635	0.0	0.000	0.60	L-Mar.2023	0.4
Prepared salads ^{7, 6}		-2.1		1.16	S-Jun.2021	-2.7
Food away from home ⁴	4.804	0.5	0.023	0.12	L-Mar.2023	0.6
Full service meals and snacks ^{4, 5}	2.302	0.4	0.009	0.13	L-Mar.2023	0.7
Limited service meals and snacks ^{4, 5}	2.236	0.5	0.012	0.15	S-Mar.2023	0.5
Food at employee sites and schools ^{4, 5}	0.074	0.3	0.000	1.84	L-Dec.2022	0.6
Food at elementary and secondary schools ^{4, 8, 6}		-0.3		0.80	S-Nov.2022	-24.1
Food from vending machines and mobile vendors ^{4, 5}	0.025	2.5	0.001	0.50	L-Oct.2022	3.7
Other food away from home ^{4, 5}	0.167	0.1	0.000	0.14	S-Jan.2023	0.0
Energy.....	6.978	-3.6	-0.250	0.20	S-Aug.2022	-3.9
Energy commodities.....	3.732	-5.6	-0.204	0.17	S-Dec.2022	-7.2
Fuel oil and other fuels.....	0.185	-5.3	-0.010	1.27	S-Feb.2023	-6.4
Fuel oil ⁴	0.123	-7.7	-0.009	1.80	S-Feb.2023	-7.9
Propane, kerosene, and firewood ⁹	0.062	-1.2	-0.001	0.66	S-Jan.2023	-2.0
Motor fuel.....	3.547	-5.6	-0.195	0.17	S-Dec.2022	-6.9
Gasoline (all types).....	3.459	-5.6	-0.191	0.17	S-Dec.2022	-7.0
Gasoline, unleaded regular ⁶		-5.3		0.73	S-Dec.2022	-7.1
Gasoline, unleaded midgrade ^{10, 6}		-5.1		0.62	S-Mar.2023	-5.3
Gasoline, unleaded premium ⁶		-4.0		0.62	S-Mar.2023	-5.2
Other motor fuels ^{4, 5}	0.087	-3.3	-0.003	0.35	S-Mar.2023	-4.9
Energy services.....	3.247	-1.4	-0.046	0.43	L-Jan.2023	2.1
Electricity.....	2.511	-1.0	-0.027	0.40	S-Jan.2021	-1.0
Utility (piped) gas service.....	0.735	-2.6	-0.019	0.69	L-Jan.2023	6.7
All items less food and energy.....	79.586	0.4	0.347	0.04	—	—
Commodities less food and energy commodities.....	21.347	0.6	0.117	0.07	—	—
Household furnishings and supplies ¹¹	4.393	-0.4	-0.018	0.25	—	—
Window and floor coverings and other linens ⁵	0.311	0.2	0.001	1.13	L-Mar.2023	0.7
Floor coverings ^{4, 5}	0.086	0.1	0.000	1.09	L-Mar.2023	0.8
Window coverings ^{4, 5}	0.072	0.5	0.000	2.27	L-Jan.2023	5.8
Other linens ⁵	0.153	-0.1	0.000	1.59	L-Mar.2023	0.8
Furniture and bedding ⁴	1.162	-0.7	-0.009	0.50	S-Nov.2022	-0.8
Bedroom furniture ⁴	0.380	0.0	0.000	0.71	S-Mar.2023	-0.8
Living room, kitchen, and dining room furniture ^{4, 5}	0.568	-1.3	-0.007	0.80	S-Oct.2022	-1.9
Other furniture ⁵	0.208	-0.6	-0.001	1.00	L-Mar.2023	1.6
Appliances ⁵	0.288	-0.3	-0.001	0.68	L-Mar.2023	0.7
Major appliances ⁵	0.104	-0.8	-0.001	1.08	L-Mar.2023	-0.1
Laundry equipment ^{4, 6}		-2.0		1.29	S-Feb.2023	-3.2
Other appliances ^{4, 5}	0.182	0.1	0.000	0.78	L-Mar.2023	0.7
Other household equipment and furnishings ⁵	0.575	-0.6	-0.003	0.63	L-Mar.2023	0.4
Clocks, lamps, and decorator items ⁴	0.323	-1.1	-0.004	0.99	S-Dec.2022	-2.6
Indoor plants and flowers ¹²	0.127	-2.2	-0.003	0.84	S-Jul.2016	-2.9
Dishes and flatware ^{4, 5}	0.041	-1.6	-0.001	1.37	L-Feb.2023	1.9
Nonelectric cookware and tableware ⁵	0.084	-0.2	0.000	0.80	L-Feb.2023	0.2

See footnotes at end of table.

Table 6. Consumer Price Index for All Urban Consumers (CPI-U): U.S. city average, by expenditure category, May 2023, 1-month analysis table — Continued
 [1982-84=100, unless otherwise noted]

Expenditure category	Relative importance Apr. 2023	One Month				
		Seasonally adjusted percent change Apr. 2023-May 2023	Seasonally adjusted effect on All Items Apr. 2023-May 2023 ¹	Standard error, median price change ²	Largest (L) or Smallest (S) seasonally adjusted change since: ³	
					Date	Percent change
Tools, hardware, outdoor equipment and supplies ⁵ . . .	1.082	-0.8	-0.009	0.52	S-Jan.2021	-1.9
Tools, hardware and supplies ⁵	0.272	-0.5	-0.001	0.59	L-Mar.2023	0.4
Outdoor equipment and supplies ⁵	0.571	-0.9	-0.005	0.63	S-Jan.2021	-2.2
Housekeeping supplies ⁴	0.975	-0.1	-0.001	0.37	S-Aug.2021	-0.3
Household cleaning products ^{4, 5}	0.327	0.4	0.001	0.52	L-Mar.2023	1.0
Household paper products ^{4, 5}	0.179	0.4	0.001	0.52	S-Feb.2023	-0.2
Miscellaneous household products ^{4, 5}	0.469	-0.7	-0.003	0.52	S-Aug.2021	-0.8
Apparel	2.565	0.3	0.007	0.34	—	—
Men's and boys' apparel	0.671	0.3	0.002	0.57	S-Feb.2023	-0.4
Men's apparel	0.497	0.8	0.004	0.64	L-Mar.2023	1.2
Men's suits, sport coats, and outerwear	0.067	0.3	0.000	1.73	S-Feb.2023	-4.7
Men's underwear, nightwear, swimwear, and accessories ⁴	0.178	1.3	0.002	0.75	L-Feb.2023	1.4
Men's shirts and sweaters ⁵	0.120	0.5	0.001	1.19	S-Mar.2023	0.5
Men's pants and shorts	0.122	0.5	0.001	1.37	S-Feb.2023	-4.0
Boys' apparel	0.174	-0.9	-0.001	1.09	S-Oct.2022	-1.1
Women's and girls' apparel	1.054	0.7	0.008	0.63	L-Feb.2023	1.2
Women's apparel	0.876	0.7	0.006	0.64	L-Feb.2023	1.0
Women's outerwear	0.049	2.9	0.001	1.66	L-Mar.2023	4.3
Women's dresses	0.097	3.7	0.003	1.35	L-Feb.2023	6.5
Women's suits and separates ⁵	0.395	1.5	0.006	1.02	L-Dec.2021	1.9
Women's underwear, nightwear, swimwear, and accessories ⁵	0.323	-1.3	-0.004	0.94	S-Mar.2022	-1.8
Girls' apparel	0.178	1.1	0.002	1.48	L-Feb.2023	1.9
Footwear	0.507	0.0	0.000	0.43	S-Mar.2023	-0.5
Men's footwear ⁴	0.179	1.3	0.002	0.72	L-Jan.2023	1.6
Boys' and girls' footwear	0.124	-1.0	-0.001	0.98	S-Apr.2022	-1.0
Women's footwear	0.204	0.0	0.000	0.63	L-Feb.2023	2.9
Infants' and toddlers' apparel	0.104	-0.5	0.000	1.35	S-Oct.2022	-1.9
Jewelry and watches ⁹	0.229	-0.8	-0.002	1.24	S-Oct.2022	-1.1
Watches ^{4, 9}	0.036	1.2	0.000	0.76	L-Feb.2023	1.8
Jewelry ⁹	0.193	-1.3	-0.003	1.66	S-Oct.2022	-1.3
Transportation commodities less motor fuel ¹¹	7.681	1.5	0.114	0.03	—	—
New vehicles	4.278	-0.1	-0.005	0.04	L-Mar.2023	0.4
New cars ⁶		-0.4		0.11	S-Apr.2021	-0.4
New trucks ^{13, 6}		-0.1		0.07	L-Mar.2023	0.3
Used cars and trucks	2.673	4.4	0.117	0.02	—	—
Motor vehicle parts and equipment ⁴	0.483	0.0	0.000	0.37	S-Feb.2023	-0.5
Tires ⁴	0.327	0.6	0.002	0.47	L-Aug.2022	1.2
Vehicle accessories other than tires ^{4, 5}	0.155	-1.3	-0.002	0.68	S-Oct.2020	-1.4
Vehicle parts and equipment other than tires ^{4, 6}		-1.3		0.86	S-Feb.2023	-1.3
Motor oil, coolant, and fluids ^{4, 6}		-1.0		0.65	S-Jan.2023	-1.8
Medical care commodities ⁴	1.456	0.6	0.009	0.21	L-Mar.2023	0.6
Medicinal drugs ^{4, 11}	1.342	0.5	0.007	0.22	L-Mar.2023	0.5
Prescription drugs ⁴	0.948	0.1	0.001	0.16	S-Mar.2023	0.1
Nonprescription drugs ^{4, 11}	0.394	1.5	0.006	0.66	L-Mar.2023	1.5
Medical equipment and supplies ^{4, 11}	0.114	2.3	0.003	0.75	L-Dec.2022	2.3
Recreation commodities ¹¹	2.274	0.0	-0.001	0.23	S-Nov.2022	-0.3
Video and audio products ¹¹	0.279	-0.8	-0.002	0.47	S-Feb.2023	-1.4
Televisions	0.136	-1.8	-0.003	0.66	S-Feb.2023	-3.0
Other video equipment ⁵	0.017	-2.5	0.000	1.02	S-Aug.2019	-2.9
Audio equipment ⁴	0.057	0.6	0.000	0.92	S-Mar.2023	-0.4
Recorded music and music subscriptions ^{4, 5}	0.059	0.6	0.000	0.58	S-Feb.2023	-0.4

See footnotes at end of table.

Table 6. Consumer Price Index for All Urban Consumers (CPI-U): U.S. city average, by expenditure category, May 2023, 1-month analysis table — Continued
 [1982-84=100, unless otherwise noted]

Expenditure category	Relative importance Apr. 2023	One Month				
		Seasonally adjusted percent change Apr. 2023-May 2023	Seasonally adjusted effect on All Items Apr. 2023-May 2023 ¹	Standard error, median price change ²	Largest (L) or Smallest (S) seasonally adjusted change since: ³	
					Date	Percent change
Pets and pet products ⁴	0.675	1.0	0.007	0.40	S-Mar.2023	0.8
Pet food ^{4, 5, 6}		0.8		0.50	S-Jan.2023	0.2
Purchase of pets, pet supplies, accessories ^{4, 5, 6}		0.9		0.77	L-Oct.2022	1.4
Sporting goods ⁴	0.746	-1.1	-0.008	0.48	S-Sep.2022	-1.1
Sports vehicles including bicycles ⁴	0.431	-1.3	-0.006	0.67	S-Sep.2022	-2.6
Sports equipment ⁴	0.307	-0.7	-0.002	0.57	S-Nov.2022	-0.9
Photographic equipment and supplies.....	0.020	0.3	0.000	0.84	L-Mar.2023	1.0
Photographic equipment ^{5, 6}		0.1		0.99	L-Mar.2023	0.8
Recreational reading materials ⁴	0.112	1.4	0.002	1.00	L-Aug.2022	2.1
Newspapers and magazines ^{4, 5}	0.060	3.1	0.002	1.45	L-Jun.2022	4.2
Recreational books ^{4, 5}	0.052	-0.5	0.000	1.00	S-Jan.2023	-0.9
Other recreational goods ⁵	0.441	0.2	0.001	0.57	L-Mar.2023	0.9
Toys.....	0.352	0.2	0.001	0.65	L-Mar.2023	0.7
Toys, games, hobbies and playground equipment ^{5, 6}		1.3		0.72	L-Jul.2022	1.5
Sewing machines, fabric and supplies ^{4, 5}	0.025	-0.9	0.000	1.24	S-Feb.2023	-5.1
Music instruments and accessories ^{4, 5}	0.052	0.8	0.000	0.45	L-Mar.2023	1.8
Education and communication commodities ¹¹	0.898	-0.2	-0.002	0.61	—	—
Educational books and supplies ⁴	0.094	0.5	0.001	0.67	L-May 2022	2.2
College textbooks ^{4, 14, 6}		0.6		0.95	L-May 2022	2.5
Information technology commodities ¹¹	0.804	-0.3	-0.002	0.69	S-Mar.2023	-0.4
Computers, peripherals, and smart home assistants ^{4, 7}	0.367	-0.4	-0.002	0.91	L-Mar.2023	0.6
Computer software and accessories ^{4, 5}	0.023	0.3	0.000	1.80	L-Feb.2023	0.9
Telephone hardware, calculators, and other consumer information items ^{4, 5}	0.415	-0.2	-0.001	0.96	S-Mar.2023	-1.3
Smartphones ^{4, 6, 15}		0.7		1.18	L-Dec.2022	0.7
Alcoholic beverages.....	0.836	0.5	0.004	0.20	—	—
Alcoholic beverages at home.....	0.505	0.4	0.002	0.24	L-Jan.2023	0.4
Beer, ale, and other malt beverages at home.....	0.194	0.5	0.001	0.39	L-Dec.2022	1.1
Distilled spirits at home ⁴	0.086	0.2	0.000	0.31	L-Feb.2023	0.2
Whiskey at home ^{4, 6}		0.2		0.46	S-Mar.2023	0.0
Distilled spirits, excluding whiskey, at home ^{4, 6}		0.2		0.37	L-Feb.2023	0.5
Wine at home ⁴	0.226	0.4	0.001	0.40	L-Jan.2023	0.5
Alcoholic beverages away from home ⁴	0.331	0.7	0.002	0.25	S-Mar.2023	0.3
Beer, ale, and other malt beverages away from home ^{4, 5, 6}		0.7		0.33	L-Oct.2022	0.7
Wine away from home ^{4, 5, 6}		0.8		0.41	L-Dec.2022	1.0
Distilled spirits away from home ^{4, 5, 6}		0.6		0.34	S-Mar.2023	0.2
Other goods ¹¹	1.243	0.6	0.007	0.23	L-Feb.2023	0.7
Tobacco and smoking products ⁴	0.496	0.6	0.003	0.23	L-Mar.2023	0.8
Cigarettes ^{4, 5}	0.410	0.6	0.002	0.25	L-Mar.2023	1.0
Tobacco products other than cigarettes ^{4, 5}	0.079	0.4	0.000	0.57	S-Mar.2023	-0.7
Personal care products ⁴	0.599	1.0	0.006	0.35	L-Aug.2022	1.5
Hair, dental, shaving, and miscellaneous personal care products ^{4, 5}	0.315	1.5	0.005	0.45	L-Mar.2012	1.5
Cosmetics, perfume, bath, nail preparations and implements ⁴	0.272	0.5	0.001	0.44	L-Jan.2023	1.0
Miscellaneous personal goods ^{4, 5}	0.149	-1.1	-0.002	0.90	S-Mar.2023	-1.3
Stationery, stationery supplies, gift wrap ⁶		0.9		0.94	L-Dec.2022	2.5
Services less energy services.....	58.238	0.4	0.230	0.05	—	—
Shelter.....	34.564	0.6	0.192	0.06	L-Mar.2023	0.6
Rent of shelter ¹⁶	34.195	0.5	0.179	0.06	—	—
Rent of primary residence.....	7.542	0.5	0.037	0.05	S-Mar.2023	0.5

See footnotes at end of table.

Table 6. Consumer Price Index for All Urban Consumers (CPI-U): U.S. city average, by expenditure category, May 2023, 1-month analysis table — Continued
 [1982-84=100, unless otherwise noted]

Expenditure category	Relative importance Apr. 2023	One Month				
		Seasonally adjusted percent change Apr. 2023-May 2023	Seasonally adjusted effect on All Items Apr. 2023-May 2023 ¹	Standard error, median price change ²	Largest (L) or Smallest (S) seasonally adjusted change since: ³	
					Date	Percent change
Lodging away from home ⁵	1.221	1.8	0.021	1.24	L-Mar.2023	2.7
Housing at school, excluding board ¹⁶	0.159	0.1	0.000	0.05	S-Oct.2022	0.1
Other lodging away from home including hotels and motels.....	1.061	2.1	0.021	1.42	L-Mar.2023	3.1
Owners' equivalent rent of residences ¹⁶	25.432	0.5	0.134	0.05	—	—
Owners' equivalent rent of primary residence ¹⁶ ..	24.047	0.5	0.127	0.05	—	—
Tenants' and household insurance ^{4, 5}	0.370	0.1	0.001	0.14	S-Mar.2023	0.0
Water and sewer and trash collection services ⁵	1.058	0.6	0.006	0.12	L-Feb.2023	0.8
Water and sewerage maintenance.....	0.757	0.3	0.002	0.13	L-Mar.2023	0.3
Garbage and trash collection ^{4, 13}	0.301	1.3	0.004	0.16	L-Sep.2022	1.7
Household operations ^{4, 5}	0.892	-1.2	-0.011	0.23	S-EVER	—
Domestic services ^{4, 5}	0.272	-2.0	-0.005	0.31	S-Nov.2022	-3.0
Gardening and lawncare services ^{4, 5}						
Moving, storage, freight expense ^{4, 5}	0.103	1.8	0.002	0.88	L-May 2022	2.4
Repair of household items ^{4, 5}	0.116		0.000	0.18	—	—
Medical care services.....	6.423	-0.1	-0.003	0.10	—	—
Professional services.....	3.535	0.0	-0.001	0.15	S-Mar.2023	0.0
Physicians' services ⁴	1.799	-0.5	-0.009	0.18	S-Feb.2023	-0.5
Dental services.....	0.910	0.1	0.001	0.25	S-Feb.2023	0.1
Eyeglasses and eye care ^{4, 9}	0.308	0.5	0.002	0.36	L-Sep.2022	3.2
Services by other medical professionals ^{4, 9}	0.518	1.2	0.006	0.21	L-Jan.2022	2.5
Hospital and related services ⁴	2.245	0.8	0.017	0.13	L-Dec.2022	1.1
Hospital services ^{4, 17}	1.909	1.0	0.019	0.15	L-Dec.2022	1.3
Inpatient hospital services ^{4, 17, 6}		1.0		0.28	L-Dec.2022	1.2
Outpatient hospital services ^{4, 9, 6}		0.9		0.28	L-Mar.2023	0.9
Nursing homes and adult day services ¹⁷	0.188	-0.8	-0.001	0.16	S-EVER	—
Care of invalids and elderly at home ^{4, 8}	0.149	-0.1	0.000	0.24	S-Dec.2021	-2.0
Health insurance ^{4, 8}	0.642	-3.7	-0.024	0.10	L-Jan.2023	-3.6
Transportation services.....	5.884	0.8	0.049	0.21	L-Mar.2023	1.4
Leased cars and trucks ^{4, 14}	0.753	-1.6	-0.012	0.84	S-Nov.2022	-1.9
Car and truck rental ⁵	0.122	-3.3	-0.004	1.18	S-Mar.2023	-3.8
Motor vehicle maintenance and repair ⁴	1.106	0.6	0.007	0.40	L-Jan.2023	1.3
Motor vehicle body work ⁴	0.058	-0.5	0.000	0.30	S-Aug.2022	-1.2
Motor vehicle maintenance and servicing ⁴	0.569	1.0	0.005	0.51	L-Oct.2022	1.2
Motor vehicle repair ^{4, 5}	0.423	0.3	0.001	0.64	S-Mar.2023	0.2
Motor vehicle insurance.....	2.591	2.0	0.051	0.22	L-Jul.2020	9.4
Motor vehicle fees ^{4, 5}	0.491	0.0	0.000	0.22	S-Mar.2023	-0.3
State motor vehicle registration and license fees ^{4, 5}	0.276	-0.1	0.000	0.08	S-Nov.2022	-0.3
Parking and other fees ^{4, 5}	0.194	0.3	0.001	0.47	L-Feb.2023	0.5
Parking fees and tolls ^{5, 6}		-0.1		0.52	S-Nov.2022	-0.9
Public transportation.....	0.822	0.9	0.007	0.69	L-Mar.2023	3.2
Airline fares.....	0.630	-3.0	-0.019	0.95	S-Jul.2022	-8.4
Other intercity transportation.....	0.048	1.4	0.001	0.65	L-Oct.2022	1.4
Ship fare ^{4, 5, 6}		2.7		0.90	L-Dec.2020	3.8
Intracity transportation ⁴	0.140	-0.5	-0.001	0.60	S-Feb.2023	-0.9
Intracity mass transit ^{4, 11, 6}		0.0		0.07	—	—
Recreation services ¹¹	3.120	-0.1	-0.003	0.20	S-Nov.2021	-0.5
Video and audio services ¹¹	1.004	0.1	0.001	0.21	S-Dec.2022	-0.5
Cable, satellite, and live streaming television service ¹³	0.889	0.0	0.000	0.18	S-Dec.2022	-0.5
Purchase, subscription, and rental of video ^{4, 5}	0.115	1.4	0.002	0.91	L-Jul.2022	1.7
Video discs and other media ^{4, 5, 6}		6.8		1.97	L-EVER	—

See footnotes at end of table.

Table 6. Consumer Price Index for All Urban Consumers (CPI-U): U.S. city average, by expenditure category, May 2023, 1-month analysis table — Continued
 [1982-84=100, unless otherwise noted]

Expenditure category	Relative importance Apr. 2023	One Month				
		Seasonally adjusted percent change Apr. 2023-May 2023	Seasonally adjusted effect on All Items Apr. 2023-May 2023 ¹	Standard error, median price change ²	Largest (L) or Smallest (S) seasonally adjusted change since: ³	
					Date	Percent change
Subscription and rental of video and video games ^{4, 5, 6}		-0.6		0.49	S-Jul.2021	-1.3
Pet services including veterinary ⁵	0.561	-0.6	-0.003	0.31	S-Dec.2016	-0.7
Pet services ^{4, 5, 6}		-0.3		0.53	S-Jun.2022	-0.7
Veterinarian services ^{5, 6}		-0.1		0.41	S-Dec.2022	-0.4
Photographers and photo processing ^{4, 5}	0.039	0.3	0.000	0.34	L-Feb.2023	1.2
Other recreation services ⁵	1.515	-0.1	-0.001	0.29	S-Mar.2023	-0.7
Club membership for shopping clubs, fraternal, or other organizations, or participant sports fees ^{4, 5}	0.668	0.3	0.002	0.18	L-Feb.2023	0.8
Admissions ⁴	0.424	-0.7	-0.003	0.69	L-Feb.2023	1.1
Admission to movies, theaters, and concerts ^{4, 5, 6}		-0.3		0.54	S-Dec.2022	-0.3
Admission to sporting events ^{4, 5, 6}		-3.7		2.96	L-Feb.2023	4.2
Fees for lessons or instructions ^{4, 9}	0.190	0.1	0.000	0.38	S-Mar.2023	-0.2
Education and communication services ¹¹	4.841	-0.2	-0.007	0.06	S-Nov.2018	-0.4
Tuition, other school fees, and childcare.....	2.142	0.1	0.001	0.06	S-Feb.2023	0.1
College tuition and fees.....	1.170	0.2	0.002	0.07	—	—
Elementary and high school tuition and fees.....	0.301	0.7	0.002	0.09	L-May 2022	0.8
Day care and preschool ¹²	0.569	-0.3	-0.002	0.19	S-Mar.2021	-0.5
Technical and business school tuition and fees ^{4, 5}	0.026	0.1	0.000	0.14	—	—
Postage and delivery services ⁵	0.074	0.1	0.000	0.06	S-Mar.2023	0.1
Postage.....	0.063	0.4	0.000	0.00	L-Jan.2023	1.2
Delivery services ⁵	0.011	-1.5	0.000	0.48	S-Sep.2021	-1.6
Telephone services ^{4, 5}	1.647	-0.5	-0.009	0.06	S-Mar.2022	-0.6
Wireless telephone services ^{4, 5}	1.403	-0.6	-0.008	0.04	S-Mar.2022	-0.7
Residential telephone services ^{4, 11}	0.244	-0.3	-0.001	0.21	S-Mar.2023	-0.3
Internet services and electronic information providers ^{4, 5}	0.972	0.0	0.000	0.21	L-Mar.2023	0.9
Other personal services ^{4, 11}	1.455	0.5	0.007	0.18	S-Mar.2023	0.5
Personal care services ⁴	0.602	0.2	0.001	0.34	S-Mar.2023	0.2
Haircuts and other personal care services ^{4, 5}	0.602	0.2	0.001	0.34	S-Mar.2023	0.2
Miscellaneous personal services ⁴	0.854	0.7	0.006	0.20	S-Mar.2023	0.7
Legal services ^{4, 9}	0.247		0.001	0.18	—	—
Funeral expenses ^{4, 9}	0.168	0.4	0.001	0.19	L-Mar.2023	0.5
Laundry and dry cleaning services ^{4, 5}	0.142	1.0	0.001	0.36	L-Nov.2022	1.6
Apparel services other than laundry and dry cleaning ^{4, 5}	0.027	1.9	0.001	0.69	L-Sep.2022	5.0
Financial services ^{4, 9}	0.190	0.5	0.001	0.59	S-Dec.2022	-2.9
Checking account and other bank services ^{4, 5, 6}		0.0		0.13	—	—
Tax return preparation and other accounting fees ^{4, 5, 6}		0.7		0.81	S-Dec.2022	-3.5
Special aggregate indexes						
All items less food.....	86.564	0.1	0.097	0.04	S-Mar.2023	0.1
All items less shelter.....	65.436	-0.1	-0.068	0.05	S-Mar.2023	-0.2
All items less food and shelter.....	51.999	-0.2	-0.096	0.06	S-Mar.2023	-0.3
All items less food, shelter, and energy.....	45.021	0.3	0.154	0.05	S-Mar.2023	0.3
All items less food, shelter, energy, and used cars and trucks.....	42.348	0.1	0.037	0.06	S-Feb.2021	0.1
All items less medical care.....	92.122	0.1	0.118	0.04	S-Mar.2023	0.1
All items less energy.....	93.022	0.4	0.374	0.04	—	—

See footnotes at end of table.

Table 6. Consumer Price Index for All Urban Consumers (CPI-U): U.S. city average, by expenditure category, May 2023, 1-month analysis table — Continued
 [1982-84=100, unless otherwise noted]

Expenditure category	Relative importance Apr. 2023	One Month				
		Seasonally adjusted percent change Apr. 2023-May 2023	Seasonally adjusted effect on All Items Apr. 2023-May 2023 ¹	Standard error, median price change ²	Largest (L) or Smallest (S) seasonally adjusted change since: ³	
					Date	Percent change
Commodities.....	38.515	-0.2	-0.060	0.06	S-Mar.2023	-0.3
Commodities less food, energy, and used cars and trucks.....	18.674	0.0	0.000	0.09	—	—
Commodities less food.....	25.079	-0.3	-0.087	0.08	S-Mar.2023	-0.5
Commodities less food and beverages.....	24.243	-0.4	-0.091	0.09	S-Mar.2023	-0.6
Services.....	61.485	0.3	0.185	0.05	L-Mar.2023	0.3
Services less rent of shelter ¹⁶	27.290	-0.2	-0.059	0.08	S-May 2020	-0.4
Services less medical care services.....	55.062	0.3	0.139	0.06	S-Dec.2021	0.3
Durables.....	12.547	0.3	0.034	0.08	S-Feb.2023	0.0
Nondurables.....	25.968	-0.6	-0.166	0.08	S-Mar.2023	-0.6
Nondurables less food.....	12.532	-1.4	-0.170	0.12	S-Mar.2023	-2.1
Nondurables less food and beverages.....	11.696	-1.5	-0.174	0.13	S-Mar.2023	-2.3
Nondurables less food, beverages, and apparel.....	9.130	-2.0	-0.184	0.12	S-Mar.2023	-2.8
Nondurables less food and apparel.....	9.966	-1.8	-0.180	0.11	S-Mar.2023	-2.5
Housing.....	44.339	0.2	0.109	0.06	—	—
Education and communication ⁵	5.739	-0.2	-0.009	0.10	S-Mar.2022	-0.2
Education ⁵	2.236	0.1	0.002	0.07	S-Feb.2023	0.1
Communication ⁵	3.503	-0.3	-0.011	0.17	S-Jul.2022	-0.3
Information and information processing ⁵	3.430	-0.3	-0.011	0.17	S-Oct.2022	-0.3
Information technology, hardware and services ¹⁸	1.783	-0.1	-0.003	0.34	L-Mar.2023	0.3
Recreation ⁵	5.395	-0.1	-0.004	0.15	S-Dec.2021	-0.1
Video and audio ⁵	1.283	-0.1	-0.001	0.20	S-Dec.2022	-0.4
Pets, pet products and services ⁵	1.237	0.3	0.003	0.26	S-Dec.2022	-0.1
Photography ⁵	0.061	0.3	0.000	0.47	L-Feb.2023	0.8
Food and beverages.....	14.272	0.2	0.032	0.09	L-Feb.2023	0.3
Domestically produced farm food ⁴	7.213	0.1	0.005	0.14	S-Mar.2023	-0.2
Other services.....	9.417	0.0	-0.003	0.08	S-Nov.2021	-0.1
Apparel less footwear.....	2.058	0.4	0.007	0.41	L-Mar.2023	0.5
Fuels and utilities.....	4.490	-1.1	-0.049	0.33	—	—
Household energy.....	3.432	-1.6	-0.055	0.42	—	—
Medical care.....	7.878	0.1	0.006	0.09	L-Dec.2022	0.3
Transportation.....	17.112	-0.2	-0.031	0.10	S-Mar.2023	-0.5
Private transportation.....	16.290	-0.2	-0.039	0.10	S-Mar.2023	-0.7
New and used motor vehicles ⁵	8.073	1.2	0.098	0.11	—	—
Utilities and public transportation.....	7.662	-1.1	-0.085	0.20	S-Apr.2020	-1.4
Household furnishings and operations.....	5.285	-0.6	-0.034	0.21	S-Aug.2009	-0.6
Other goods and services.....	2.698	0.5	0.014	0.15	S-Mar.2023	0.5
Personal care ⁴	2.203	0.5	0.011	0.17	S-Mar.2023	0.4

¹ The 'effect' of an item category is a measure of that item's contribution to the All items price change. For example, if the Food index had an effect of 0.40, and the All items index rose 1.2 percent, then the increase in food prices contributed 0.40 / 1.2, or 33.3 percent, to that All items increase. Said another way, had food prices been unchanged for that month the change in the All items index would have been 1.2 percent minus 0.40, or 0.8 percent. Effects can be negative as well. For example, if the effect of food was a negative 0.1, and the All items index rose 0.5 percent, the All items index actually would have been 0.1 percent higher (or 0.6 percent) had food prices been unchanged. Since food prices fell while prices overall were rising, the contribution of food to the All items price change was negative (in this case, -0.1 / 0.5, or minus 20 percent).

² A statistic's margin of error is often expressed as its point estimate plus or minus two standard errors. For example, if a CPI category rose 0.6 percent, and its standard error was 0.15 percent, the margin of error on this item's 1-month percent change would be 0.6 percent, plus or minus 0.3 percent.

³ If the current seasonally adjusted 1-month percent change is greater than the previous published 1-month percent change, then this column identifies the closest prior month with a 1-month percent change as (L)arge as or (L)arger than the current 1-month change. If the current 1-month percent change is smaller than the previous published 1-month percent change, the most recent month with a change as (S)mall or (S)maller than the current month change is identified. If the current and previous published 1-month percent changes are equal, a dash will appear. Standard numerical comparisons are used. For example, 0.8% is greater than 0.6%, -0.4% is less than -0.2%, and -0.2% is less than 0.0%. Note that a (L)arger change can be a smaller decline, for example, a -0.2% change is larger than a -0.4% change, but still represents a decline in the price index. Likewise, (S)maller changes can be increases, for example, a 0.6% change is smaller than 0.8%, but still represents an increase in the price index. In this context, a -0.2% change is considered to be smaller than a 0.0% change.

⁴ Not seasonally adjusted.

⁵ Indexes on a December 1997=100 base.

⁶ Special indexes based on a substantially smaller sample. These series do not contribute to the all items index aggregation and therefore do not have a relative importance or effect.

⁷ Indexes on a December 2007=100 base.

⁸ Indexes on a December 2005=100 base.

⁹ Indexes on a December 1986=100 base.

¹⁰ Indexes on a December 1993=100 base.

¹¹ Indexes on a December 2009=100 base.

¹² Indexes on a December 1990=100 base.

¹³ Indexes on a December 1983=100 base.

¹⁴ Indexes on a December 2001=100 base.

¹⁵ Indexes on a December 2019=100 base.

¹⁶ Indexes on a December 1982=100 base.

¹⁷ Indexes on a December 1996=100 base.

¹⁸ Indexes on a December 1988=100 base.

Table 7. Consumer Price Index for All Urban Consumers (CPI-U): U.S. city average, by expenditure category, May 2023, 12-month analysis table
 [1982-84=100, unless otherwise noted]

Expenditure category	Relative importance Apr. 2023	Twelve Month				
		Unadjusted percent change May 2022-May 2023	Unadjusted effect on All Items May 2022-May 2023 ¹	Standard error, median price change ²	Largest (L) or Smallest (S) unadjusted change since: ³	
					Date	Percent change
All items.....	100.000	4.0		0.12	S-Mar.2021	2.6
Food.....	13.436	6.7	0.892	0.19	S-Dec.2021	6.3
Food at home.....	8.632	5.8	0.484	0.26	S-Oct.2021	5.4
Cereals and bakery products.....	1.168	10.7	0.114	0.54	S-Apr.2022	10.3
Cereals and cereal products.....	0.365	9.3	0.032	0.87	S-Feb.2022	7.7
Flour and prepared flour mixes.....	0.061	17.1	0.009	2.29	S-May 2022	13.7
Breakfast cereal.....	0.146	8.5	0.012	1.37	S-Feb.2022	7.5
Rice, pasta, cornmeal.....	0.159	7.1	0.010	1.09	S-Feb.2022	6.1
Rice ^{4, 5}		5.9		1.25	S-Feb.2022	4.8
Bakery products.....	0.803	11.4	0.083	0.69	S-May 2022	11.1
Bread ⁴	0.224	12.5	0.025	1.07	S-Jun.2022	10.8
White bread ⁵		13.4		1.29	S-Jul.2022	12.9
Bread other than white ⁵		11.2		1.48	L-Mar.2023	13.8
Fresh biscuits, rolls, muffins ⁴	0.119	11.6	0.012	1.60	S-Mar.2023	10.3
Cakes, cupcakes, and cookies.....	0.208	11.0	0.020	1.33	S-Apr.2022	7.2
Cookies ⁵		10.9		1.61	S-Apr.2022	6.6
Fresh cakes and cupcakes ⁵		11.1		2.40	S-May 2022	10.6
Other bakery products.....	0.252	10.7	0.025	1.36	S-Feb.2022	9.6
Fresh sweetrolls, coffeecakes, doughnuts ⁵		5.7		2.06	S-Feb.2023	5.1
Crackers, bread, and cracker products ⁵		12.4		1.86	S-Dec.2021	11.0
Frozen and refrigerated bakery products, pies, tarts, turnovers ⁵		12.1		1.78	S-Mar.2022	10.6
Meats, poultry, fish, and eggs.....	1.799	0.3	0.007	0.47	S-May 2021	0.1
Meats, poultry, and fish.....	1.654	0.5	0.008	0.49	S-May 2021	0.4
Meats.....	1.023	0.4	0.004	0.54	L-Mar.2023	0.7
Beef and veal.....	0.440	1.0	0.003	0.84	L-Aug.2022	2.5
Uncooked ground beef.....	0.156	0.6	0.000	1.09	L-Jan.2023	0.7
Uncooked beef roasts ⁴	0.057	0.0	-0.001	2.36	L-Aug.2022	3.3
Uncooked beef steaks ⁴	0.184	2.5	0.004	1.39	L-May 2022	6.6
Uncooked other beef and veal ⁴	0.043	-2.4	-0.001	1.90	L-Jan.2023	-2.3
Pork.....	0.328	-2.9	-0.011	1.08	S-Oct.2018	-3.5
Bacon, breakfast sausage, and related products ⁴	0.140	-5.6	-0.009	1.30	S-Sep.2015	-6.4
Bacon and related products ⁵		-9.8		1.78	S-Jul.2015	-11.4
Breakfast sausage and related products ^{4, 5}		2.1		1.96	S-Mar.2021	1.4
Ham.....	0.067	8.2	0.005	2.56	L-Feb.2023	8.3
Ham, excluding canned ⁵		8.5		2.65	L-Feb.2023	8.6
Pork chops.....	0.044	-2.2	-0.001	1.97	L-Mar.2023	-1.0
Other pork including roasts, steaks, and ribs ⁴	0.077	-7.3	-0.006	2.44	S-Mar.2016	-8.9
Other meats.....	0.255	5.0	0.012	1.03	S-Nov.2021	4.8
Frankfurters ⁵		1.1		3.05	S-Dec.2021	-0.6
Lunchmeats ^{4, 5}		6.2		1.25	S-Nov.2021	4.4
Poultry.....	0.345	2.1	0.007	1.28	S-Jun.2021	1.2
Chicken ⁴	0.276	0.9	0.003	1.34	S-Jun.2021	0.3
Fresh whole chicken ⁵		4.4		2.82	S-Jul.2021	2.2
Fresh and frozen chicken parts ⁵		-0.7		1.75	S-Feb.2020	-0.8
Other uncooked poultry including turkey ⁴	0.070	6.9	0.005	2.65	S-Dec.2021	5.6
Fish and seafood.....	0.285	-1.1	-0.003	1.00	S-May 2016	-1.2
Fresh fish and seafood ⁴	0.140	-2.0	-0.003	1.48	S-Mar.2016	-2.6
Processed fish and seafood ⁴	0.146	-0.1	0.000	1.31	S-Mar.2020	-1.2
Shelf stable fish and seafood ⁵		0.4		1.98	S-Nov.2021	0.0
Frozen fish and seafood ⁵		0.3		1.78	S-Apr.2021	-0.8
Eggs.....	0.145	-0.4	-0.001	2.30	S-May 2021	-3.5

See footnotes at end of table.

Table 7. Consumer Price Index for All Urban Consumers (CPI-U): U.S. city average, by expenditure category, May 2023, 12-month analysis table — Continued
 [1982-84=100, unless otherwise noted]

Expenditure category	Relative importance Apr. 2023	Twelve Month				
		Unadjusted percent change May 2022- May 2023	Unadjusted effect on All Items May 2022- May 2023 ¹	Standard error, median price change ²	Largest (L) or Smallest (S) unadjusted change since: ³	
					Date	Percent change
Dairy and related products.....	0.799	4.6	0.036	0.63	S-Jan.2022	3.1
Milk ⁴	0.195	-0.8	-0.002	1.05	S-Dec.2018	-1.2
Fresh whole milk ⁵		-3.4		1.33	S-May 2018	-3.7
Fresh milk other than whole ^{4, 5}		0.6		1.24	S-Dec.2018	-0.1
Cheese and related products.....	0.246	3.6	0.009	0.90	S-Mar.2022	3.1
Ice cream and related products.....	0.122	8.0	0.009	1.67	S-Apr.2022	4.7
Other dairy and related products ⁴	0.237	9.3	0.020	1.16	S-Apr.2022	9.0
Fruits and vegetables.....	1.467	2.7	0.040	0.64	L-Feb.2023	5.3
Fresh fruits and vegetables.....	1.091	0.6	0.007	0.78	L-Feb.2023	2.6
Fresh fruits.....	0.587	-0.5	-0.002	1.09	L-Feb.2023	0.4
Apples.....	0.085	7.7	0.006	1.97	L-Jan.2023	8.5
Bananas.....	0.090	1.3	0.001	1.38	S-Jul.2021	1.1
Citrus fruits ⁴	0.175	-5.3	-0.008	2.19	L-Mar.2023	-3.7
Oranges, including tangerines ⁵		-4.7		2.24	—	—
Other fresh fruits ⁴	0.237	-0.7	-0.002	1.87	L-Jan.2023	1.1
Fresh vegetables.....	0.503	2.0	0.009	0.87	L-Feb.2023	5.3
Potatoes.....	0.087	7.1	0.006	1.49	S-Mar.2022	3.4
Lettuce.....	0.071	9.4	0.004	1.85	L-Feb.2023	10.4
Tomatoes.....	0.079	-3.5	-0.004	2.00	S-Mar.2021	-5.1
Other fresh vegetables.....	0.266	1.0	0.003	1.11	L-Feb.2023	2.9
Processed fruits and vegetables ⁴	0.376	9.5	0.033	0.74	S-Apr.2022	8.9
Canned fruits and vegetables ⁴	0.192	7.8	0.014	1.14	S-Feb.2022	7.7
Canned fruits ^{4, 5}		8.7		1.47	S-Apr.2022	7.9
Canned vegetables ^{4, 5}		6.9		1.60	S-Jan.2022	5.1
Frozen fruits and vegetables ⁴	0.110	12.9	0.013	1.47	L-Mar.2023	15.1
Frozen vegetables ⁵		18.7		2.04	S-Jan.2023	18.6
Other processed fruits and vegetables including dried ⁴	0.075	9.3	0.006	1.53	L-Feb.2023	11.1
Dried beans, peas, and lentils ^{4, 5}		2.0		2.63	L-Feb.2023	6.0
Nonalcoholic beverages and beverage materials.....	1.043	8.7	0.084	0.62	S-Mar.2022	8.0
Juices and nonalcoholic drinks ⁴	0.734	9.9	0.067	0.88	S-Apr.2022	9.2
Carbonated drinks.....	0.309	9.5	0.027	1.51	S-Apr.2022	9.2
Frozen noncarbonated juices and drinks ⁴	0.008	15.8	0.001	1.75	L-Oct.2007	17.3
Nonfrozen noncarbonated juices and drinks ⁴	0.417	10.0	0.039	1.14	L-Mar.2023	11.9
Beverage materials including coffee and tea ⁴	0.309	5.9	0.017	1.07	S-Jan.2022	5.9
Coffee.....	0.198	4.8	0.009	1.50	S-Oct.2021	4.7
Roasted coffee ⁵		4.5		1.67	S-Sep.2021	4.3
Instant coffee ⁵		5.8		2.12	S-Dec.2021	3.0
Other beverage materials including tea ⁴	0.111	8.1	0.008	1.52	S-Aug.2022	7.7
Other food at home.....	2.354	9.2	0.203	0.42	S-Feb.2022	8.2
Sugar and sweets.....	0.302	10.2	0.029	1.29	S-Mar.2023	10.0
Sugar and sugar substitutes.....	0.041	11.1	0.004	1.15	S-May 2022	9.3
Candy and chewing gum ⁴	0.191	11.6	0.020	1.67	L-Jan.2023	12.2
Other sweets ⁴	0.070	6.2	0.004	2.14	S-Dec.2021	5.3
Fats and oils.....	0.256	11.8	0.029	1.33	S-Feb.2022	11.7
Butter and margarine ⁴	0.081	9.2	0.007	1.78	S-Feb.2022	7.3
Butter ⁵		3.1		2.76	S-Dec.2021	0.8
Margarine ⁵		22.5		2.94	S-Mar.2022	15.8
Salad dressing ⁴	0.061	14.3	0.008	1.80	S-Aug.2022	11.8
Other fats and oils including peanut butter ⁴	0.115	12.5	0.014	2.15	S-Oct.2021	11.0
Peanut butter ^{4, 5}		0.1		2.67	S-Mar.2020	-1.9
Other foods.....	1.796	8.6	0.146	0.49	S-Feb.2022	8.0
Soups.....	0.107	8.7	0.009	2.49	S-Jan.2022	6.0
Frozen and freeze dried prepared foods.....	0.274	8.4	0.023	1.18	S-Dec.2021	5.6

See footnotes at end of table.

Table 7. Consumer Price Index for All Urban Consumers (CPI-U): U.S. city average, by expenditure category, May 2023, 12-month analysis table — Continued

[1982-84=100, unless otherwise noted]

Expenditure category	Relative importance Apr. 2023	Twelve Month				
		Unadjusted percent change May 2022-May 2023	Unadjusted effect on All Items May 2022-May 2023 ¹	Standard error, median price change ²	Largest (L) or Smallest (S) unadjusted change since: ³	
					Date	Percent change
Snacks.....	0.382	7.9	0.029	1.08	S-Dec.2021	5.6
Spices, seasonings, condiments, sauces.....	0.359	9.5	0.032	0.88	S-Apr.2022	8.5
Salt and other seasonings and spices ^{4, 5}		4.3		1.57	S-Sep.2021	4.2
Olives, pickles, relishes ^{4, 5}		13.0		1.92	S-Jun.2022	12.6
Sauces and gravies ^{4, 5}		11.8		1.85	S-May 2022	11.3
Other condiments ⁵		15.7		2.25	L-EVER	—
Baby food and formula ⁴	0.039	10.1	0.004	1.74	L-Dec.2022	10.7
Other miscellaneous foods ⁴	0.635	8.5	0.049	0.87	S-Feb.2022	7.6
Prepared salads ^{6, 5}		4.2		1.97	S-Aug.2021	2.2
Food away from home.....	4.804	8.3	0.408	0.41	S-Jan.2023	8.2
Full service meals and snacks ⁴	2.302	6.8	0.158	0.46	S-Dec.2021	6.6
Limited service meals and snacks ⁴	2.236	8.0	0.189	0.44	S-Mar.2023	7.9
Food at employee sites and schools ⁴	0.074	130.6	0.045	8.16	S-Jan.2023	130.3
Food at elementary and secondary schools ^{7, 5}		294.0		67.80	S-Nov.2022	254.1
Food from vending machines and mobile vendors ⁴	0.025	15.3	0.005	1.67	L-Mar.2023	16.2
Other food away from home ⁴	0.167	7.1	0.012	0.74	S-Mar.2023	6.3
Energy.....	6.978	-11.7	-1.019	0.49	S-Jun.2020	-12.6
Energy commodities.....	3.732	-20.4	-1.084	0.51	S-Jun.2020	-23.2
Fuel oil and other fuels.....	0.185	-28.6	-0.074	1.65	S-Feb.2015	-29.3
Fuel oil.....	0.123	-37.0	-0.070	2.30	S-May 2020	-37.5
Propane, kerosene, and firewood ⁸	0.062	-6.1	-0.004	1.75	S-May 2020	-6.2
Motor fuel.....	3.547	-20.0	-1.010	0.54	S-Jul.2020	-20.3
Gasoline (all types).....	3.459	-19.7	-0.980	0.55	S-Jul.2020	-20.3
Gasoline, unleaded regular ⁵		-20.3		0.88	S-Jul.2020	-20.9
Gasoline, unleaded midgrade ^{9, 5}		-17.7		0.96	S-Jun.2020	-20.6
Gasoline, unleaded premium ⁵		-15.6		0.95	S-Nov.2020	-16.4
Other motor fuels ⁴	0.087	-26.2	-0.030	0.77	S-Mar.2016	-29.2
Energy services.....	3.247	1.6	0.065	0.83	S-Oct.2020	1.4
Electricity.....	2.511	5.9	0.150	1.16	S-Sep.2021	5.2
Utility (piped) gas service.....	0.735	-11.0	-0.086	1.15	S-Jan.2016	-12.7
All items less food and energy.....	79.586	5.3	4.175	0.13	S-Nov.2021	4.9
Commodities less food and energy commodities.....	21.347	2.0	0.446	0.22	—	—
Household furnishings and supplies ¹⁰	4.393	4.1	0.167	0.58	S-Aug.2021	3.3
Window and floor coverings and other linens ⁴	0.311	2.2	0.006	2.38	L-Mar.2023	4.8
Floor coverings ⁴	0.086	7.7	0.006	3.67	S-Jan.2022	7.2
Window coverings ⁴	0.072	-0.5	0.000	4.81	L-Mar.2023	3.6
Other linens ⁴	0.153	0.5	0.001	3.57	S-Sep.2022	-1.3
Furniture and bedding.....	1.162	-0.5	-0.007	1.48	S-Jul.2020	-2.3
Bedroom furniture.....	0.380	1.0	0.004	1.94	L-Feb.2023	1.6
Living room, kitchen, and dining room furniture ⁴	0.568	-0.2	-0.004	2.32	S-Jul.2020	-3.0
Other furniture ⁴	0.208	-4.0	-0.007	2.83	S-Apr.2020	-5.3
Appliances ⁴	0.288	-0.2	0.001	1.60	L-Mar.2023	1.1
Major appliances ⁴	0.104	-10.0	-0.010	3.05	L-Mar.2023	-7.9
Laundry equipment ⁵		-1.7		2.53	S-Mar.2023	-3.1
Other appliances ⁴	0.182	5.8	0.010	1.96	L-Mar.2023	6.4
Other household equipment and furnishings ⁴	0.575	0.4	0.003	1.93	L-Feb.2023	0.8
Clocks, lamps, and decorator items.....	0.323	1.7	0.006	3.33	L-Dec.2022	2.1
Indoor plants and flowers ¹¹	0.127	1.9	0.001	1.84	S-Sep.2020	1.8
Dishes and flatware ⁴	0.041	-2.7	-0.001	3.50	S-Nov.2021	-3.9
Nonelectric cookware and tableware ⁴	0.084	-3.7	-0.003	2.19	S-Jun.2020	-5.7
Tools, hardware, outdoor equipment and supplies ⁴	1.082	8.8	0.085	1.32	S-Dec.2021	7.2
Tools, hardware and supplies ⁴	0.272	7.4	0.018	1.71	S-Dec.2021	6.2
Outdoor equipment and supplies ⁴	0.571	10.2	0.051	1.65	S-Jan.2023	8.6

See footnotes at end of table.

Table 7. Consumer Price Index for All Urban Consumers (CPI-U): U.S. city average, by expenditure category, May 2023, 12-month analysis table — Continued

[1982-84=100, unless otherwise noted]

Expenditure category	Relative importance Apr. 2023	Twelve Month				
		Unadjusted percent change May 2022-May 2023	Unadjusted effect on All Items May 2022-May 2023 ¹	Standard error, median price change ²	Largest (L) or Smallest (S) unadjusted change since: ³	
					Date	Percent change
Housekeeping supplies.....	0.975	8.5	0.079	0.80	S-Apr.2022	8.3
Household cleaning products ⁴	0.327	6.0	0.020	1.17	L-Mar.2023	7.6
Household paper products ⁴	0.179	12.4	0.025	1.35	L-Jan.2023	12.9
Miscellaneous household products ⁴	0.469	8.4	0.034	1.41	S-Apr.2022	7.0
Apparel.....	2.565	3.5	0.091	0.80	S-Mar.2023	3.3
Men's and boys' apparel.....	0.671	3.4	0.024	1.45	S-Mar.2023	2.9
Men's apparel.....	0.497	4.1	0.021	1.65	L-Jan.2023	4.5
Men's suits, sport coats, and outerwear.....	0.067	-0.6	-0.001	4.48	S-Jul.2021	-6.1
Men's underwear, nightwear, swimwear, and accessories.....	0.178	4.8	0.009	1.84	L-Jan.2023	4.9
Men's shirts and sweaters ⁴	0.120	2.2	0.003	3.58	S-Mar.2023	1.3
Men's pants and shorts.....	0.122	8.2	0.009	2.80	L-Jul.2021	11.2
Boys' apparel.....	0.174	1.6	0.003	2.56	S-Jan.2023	-1.0
Women's and girls' apparel.....	1.054	4.6	0.049	1.46	L-Nov.2022	5.6
Women's apparel.....	0.876	4.2	0.038	1.64	L-Nov.2022	5.7
Women's outerwear.....	0.049	7.8	0.003	3.41	L-May 2022	8.0
Women's dresses.....	0.097	2.1	0.003	3.22	L-Feb.2023	2.6
Women's suits and separates ⁴	0.395	4.8	0.019	2.03	L-Nov.2022	5.9
Women's underwear, nightwear, swimwear, and accessories ⁴	0.323	3.6	0.012	3.55	S-Aug.2022	3.6
Girls' apparel.....	0.178	6.8	0.012	3.35	L-Oct.2022	7.1
Footwear.....	0.507	0.2	-0.001	1.11	S-Mar.2021	-0.2
Men's footwear.....	0.179	-0.7	-0.001	1.63	L-Feb.2023	-0.2
Boys' and girls' footwear.....	0.124	0.6	0.001	2.71	S-Feb.2023	-1.0
Women's footwear.....	0.204	0.9	0.000	1.66	S-Jan.2023	0.1
Infants' and toddlers' apparel.....	0.104	3.5	0.003	3.96	S-Oct.2022	2.3
Jewelry and watches ⁸	0.229	6.8	0.015	2.61	S-Jan.2023	4.9
Watches ⁸	0.036	2.1	0.001	4.24	L-Feb.2023	3.2
Jewelry ⁸	0.193	7.8	0.014	3.21	S-Jan.2023	5.3
Transportation commodities less motor fuel ¹⁰	7.681	0.1	-0.003	0.30	L-Nov.2022	2.4
New vehicles.....	4.278	4.7	0.191	0.63	S-May 2021	3.3
New cars ⁵		4.2		1.00	S-May 2021	3.1
New trucks ^{12, 5}		4.9		0.94	S-May 2021	3.6
Used cars and trucks.....	2.673	-4.2	-0.218	0.12	L-Nov.2022	-3.3
Motor vehicle parts and equipment.....	0.483	4.2	0.018	1.28	S-Jun.2021	3.5
Tires.....	0.327	3.3	0.009	1.35	S-May 2021	3.1
Vehicle accessories other than tires ⁴	0.155	5.8	0.009	2.38	S-Sep.2021	4.7
Vehicle parts and equipment other than tires ⁵		4.6		2.81	S-Sep.2021	2.0
Motor oil, coolant, and fluids ⁵		10.5		2.06	S-Dec.2021	9.2
Medical care commodities.....	1.456	4.4	0.065	0.62	L-Jan.2017	4.7
Medicinal drugs ¹⁰	1.342	4.0	0.054	0.64	L-Aug.2022	4.0
Prescription drugs.....	0.948	3.1	0.030	0.64	L-Aug.2022	3.2
Nonprescription drugs ¹⁰	0.394	6.2	0.024	1.49	L-EVER	-
Medical equipment and supplies ¹⁰	0.114	10.3	0.011	1.66	L-EVER	-
Recreation commodities ¹⁰	2.274	2.7	0.057	0.62	S-Mar.2021	0.8
Video and audio products ¹⁰	0.279	-4.0	-0.011	1.07	L-Mar.2022	-2.1
Televisions.....	0.136	-11.5	-0.016	1.13	L-May 2022	-9.5
Other video equipment ⁴	0.017	-4.0	-0.001	2.94	S-Feb.2023	-7.5
Audio equipment.....	0.057	5.4	0.003	2.97	L-EVER	-
Recorded music and music subscriptions ⁴	0.059	4.6	0.003	1.26	L-Dec.2017	5.4
Pets and pet products.....	0.675	10.6	0.062	1.06	-	-
Pet food ^{4, 5}		13.8		1.44	S-Aug.2022	13.1
Purchase of pets, pet supplies, accessories ^{4, 5}		5.7		1.87	L-Jan.2023	7.2
Sporting goods.....	0.746	-0.9	-0.008	1.29	S-Apr.2020	-1.1

See footnotes at end of table.

Table 7. Consumer Price Index for All Urban Consumers (CPI-U): U.S. city average, by expenditure category, May 2023, 12-month analysis table — Continued

[1982-84=100, unless otherwise noted]

Expenditure category	Relative importance Apr. 2023	Twelve Month				
		Unadjusted percent change May 2022- May 2023	Unadjusted effect on All Items May 2022- May 2023 ¹	Standard error, median price change ²	Largest (L) or Smallest (S) unadjusted change since: ³	
					Date	Percent change
Sports vehicles including bicycles.....	0.431	-0.4	-0.003	2.06	S-Apr.2020	-0.5
Sports equipment.....	0.307	-1.5	-0.005	1.60	S-Jun.2020	-3.3
Photographic equipment and supplies.....	0.020	5.0	0.001	3.12	S-Nov.2022	3.3
Photographic equipment ^{4, 5}		4.0		4.24	S-Jan.2023	3.7
Recreational reading materials.....	0.112	2.9	0.003	1.71	L-Mar.2023	3.8
Newspapers and magazines ⁴	0.060	4.6	0.003	2.69	L-Mar.2023	6.2
Recreational books ⁴	0.052	0.9	0.000	2.26	S-Mar.2023	0.6
Other recreational goods ⁴	0.441	2.1	0.010	1.45	—	—
Toys.....	0.352	1.7	0.006	1.66	L-Mar.2023	2.0
Toys, games, hobbies and playground equipment ^{4, 5}		3.5		2.97	L-Dec.2022	3.5
Sewing machines, fabric and supplies ⁴	0.025	1.7	0.000	3.77	S-Feb.2023	1.2
Music instruments and accessories ⁴	0.052	7.3	0.004	1.91	L-Feb.2022	9.7
Education and communication commodities ¹⁰	0.898	-6.9	-0.057	1.55	L-Jun.2022	-5.7
Educational books and supplies.....	0.094	-1.3	-0.001	2.75	S-Aug.2020	-1.3
College textbooks ^{13, 5}		-1.5		2.11	S-Aug.2020	-2.1
Information technology commodities ¹⁰	0.804	-7.6	-0.055	1.94	L-Jun.2022	-6.7
Computers, peripherals, and smart home assistants ⁶	0.367	-4.2	-0.014	3.10	L-Oct.2022	-3.1
Computer software and accessories ⁴	0.023	-2.8	-0.001	3.17	S-Jan.2023	-2.9
Telephone hardware, calculators, and other consumer information items ⁴	0.415	-11.0	-0.041	2.23	L-Mar.2022	-9.0
Smartphones ^{5, 14}		-15.3		3.27	L-Mar.2022	-13.5
Alcoholic beverages.....	0.836	4.8	0.041	0.56	L-Feb.2023	4.9
Alcoholic beverages at home.....	0.505	3.9	0.022	0.65	L-Mar.2023	3.9
Beer, ale, and other malt beverages at home.....	0.194	6.1	0.013	0.85	L-Mar.2023	6.1
Distilled spirits at home.....	0.086	1.6	0.002	0.64	L-Mar.2023	2.1
Whiskey at home ⁵		1.1		1.47	L-Jan.2023	1.3
Distilled spirits, excluding whiskey, at home ⁵		1.3		1.03	—	—
Wine at home.....	0.226	2.9	0.007	1.04	L-Jan.2023	3.3
Alcoholic beverages away from home.....	0.331	6.3	0.019	1.01	S-Mar.2023	5.8
Beer, ale, and other malt beverages away from home ^{4, 5}		5.0		1.15	S-Apr.2022	5.0
Wine away from home ^{4, 5}		6.3		1.11	S-Apr.2022	5.0
Distilled spirits away from home ^{4, 5}		7.1		1.24	L-Dec.2022	7.4
Other goods ¹⁰	1.243	6.6	0.084	0.49	S-Jun.2022	6.6
Tobacco and smoking products.....	0.496	6.3	0.032	0.73	S-Jan.2023	6.3
Cigarettes ⁴	0.410	6.3	0.027	0.72	S-Dec.2022	5.5
Tobacco products other than cigarettes ⁴	0.079	6.0	0.004	1.50	S-Mar.2023	3.8
Personal care products.....	0.599	7.5	0.046	0.66	L-Dec.2022	7.5
Hair, dental, shaving, and miscellaneous personal care products ⁴	0.315	9.6	0.030	0.81	L-Dec.2022	9.9
Cosmetics, perfume, bath, nail preparations and implements.....	0.272	5.3	0.015	0.99	L-Jan.2023	5.7
Miscellaneous personal goods ⁴	0.149	3.9	0.007	2.04	S-Jul.2021	3.1
Stationery, stationery supplies, gift wrap ⁵		9.4		3.36	S-Aug.2022	9.3
Services less energy services.....	58.238	6.6	3.729	0.16	S-Aug.2022	6.1
Shelter.....	34.564	8.0	2.634	0.23	S-Jan.2023	7.9
Rent of shelter ¹⁵	34.195	8.1	2.628	0.24	S-Jan.2023	8.0
Rent of primary residence.....	7.542	8.7	0.627	0.21	S-Jan.2023	8.6
Lodging away from home ⁴	1.221	3.4	0.071	2.31	L-Mar.2023	7.3
Housing at school, excluding board ¹⁵	0.159	3.0	0.004	0.31	—	—
Other lodging away from home including hotels and motels.....	1.061	3.7	0.068	2.63	L-Mar.2023	8.1
Owners' equivalent rent of residences ¹⁵	25.432	8.0	1.930	0.24	S-Mar.2023	8.0

See footnotes at end of table.

Table 7. Consumer Price Index for All Urban Consumers (CPI-U): U.S. city average, by expenditure category, May 2023, 12-month analysis table — Continued

[1982-84=100, unless otherwise noted]

Expenditure category	Relative importance Apr. 2023	Twelve Month				
		Unadjusted percent change May 2022- May 2023	Unadjusted effect on All Items May 2022- May 2023 ¹	Standard error, median price change ²	Largest (L) or Smallest (S) unadjusted change since: ³	
					Date	Percent change
Owners' equivalent rent of primary residence ¹⁵ . . .	24.047	8.1	1.832	0.24	—	—
Tenants' and household insurance ⁴	0.370	1.6	0.006	0.68	L-Feb.2019	1.7
Water and sewer and trash collection services ⁴	1.058	5.7	0.061	0.37	L-Jan.2013	5.7
Water and sewerage maintenance	0.757	4.9	0.037	0.44	L-Mar.2023	4.9
Garbage and trash collection ¹²	0.301	7.9	0.023	0.80	L-Jan.1993	8.1
Household operations ⁴	0.892	4.6	0.039	0.80	S-Mar.2021	4.3
Domestic services ⁴	0.272	6.5	0.016	1.50	S-Mar.2023	1.2
Gardening and lawncare services ⁴						
Moving, storage, freight expense ⁴	0.103	-0.9	-0.001	3.46	S-Feb.2023	-1.0
Repair of household items ⁴	0.116		0.012	0.96	—	—
Medical care services	6.423	-0.1	-0.004	0.39	S-EVER	—
Professional services	3.535	2.0	0.069	0.52	S-May 2022	1.9
Physicians' services	1.799	-0.1	-0.002	0.85	S-Mar.2018	-0.8
Dental services	0.910	6.6	0.059	1.14	S-Feb.2023	6.6
Eyeglasses and eye care ⁸	0.308	1.7	0.006	0.94	L-Dec.2022	1.7
Services by other medical professionals ⁸	0.518	0.8	0.006	2.53	L-Dec.2022	2.1
Hospital and related services	2.245	3.9	0.094	0.49	L-Feb.2023	4.0
Hospital services ¹⁶	1.909	3.7	0.076	0.52	L-Dec.2022	4.4
Inpatient hospital services ^{16, 5}		3.4		1.01	L-Feb.2023	3.4
Outpatient hospital services ^{8, 5}		4.9		0.87	L-Mar.2018	5.1
Nursing homes and adult day services ¹⁶	0.188	4.8	0.009	0.63	S-Dec.2022	4.7
Care of invalids and elderly at home ⁷	0.149	6.0	0.009	1.24	S-Nov.2022	3.8
Health insurance ⁷	0.642	-20.5	-0.167	0.40	S-EVER	—
Transportation services	5.884	10.2	0.581	0.68	S-Jul.2022	9.2
Leased cars and trucks ¹³	0.753		0.145	2.86	—	—
Car and truck rental ⁴	0.122	-12.4	-0.019	2.36	S-May 2020	-19.2
Motor vehicle maintenance and repair	1.106	13.5	0.137	0.90	L-Jan.2023	14.2
Motor vehicle body work	0.058	7.2	0.004	1.25	S-Oct.2021	6.8
Motor vehicle maintenance and servicing	0.569	9.9	0.055	1.22	L-Mar.2023	10.8
Motor vehicle repair ⁴	0.423	19.7	0.072	1.70	S-Mar.2023	17.4
Motor vehicle insurance	2.591	17.1	0.403	1.06	L-Dec.1976	22.4
Motor vehicle fees ⁴	0.491	3.0	0.015	0.71	S-Mar.2023	2.9
State motor vehicle registration and license fees ⁴	0.276	3.3	0.009	0.62	S-Jan.2023	3.1
Parking and other fees ⁴	0.194	2.6	0.005	1.03	L-Sep.2022	2.8
Parking fees and tolls ^{4, 5}		2.5		1.37	S-Mar.2023	2.4
Public transportation	0.822	-8.9	-0.100	1.43	S-Feb.2021	-16.2
Airline fares	0.630	-13.4	-0.101	2.20	S-Mar.2021	-15.1
Other intercity transportation	0.048	2.1	0.002	1.61	L-Feb.2023	2.5
Ship fare ^{4, 5}		2.6		2.38	L-Nov.2021	3.7
Intracity transportation	0.140	-0.9	-0.001	1.93	S-Mar.2021	-1.2
Intracity mass transit ^{10, 5}		0.2		0.54	—	—
Recreation services ¹⁰	3.120	5.8	0.178	0.48	S-Jan.2023	5.8
Video and audio services ¹⁰	1.004	4.5	0.045	0.65	S-Jan.2023	3.9
Cable, satellite, and live streaming television service ¹²	0.889	4.5	0.039	0.60	S-Jan.2023	3.4
Purchase, subscription, and rental of video ⁴	0.115	5.6	0.006	4.14	S-Oct.2022	5.2
Video discs and other media ^{4, 5}		7.8		5.83	L-Feb.2023	11.2
Subscription and rental of video and video games ^{4, 5}		5.1		1.58	S-Mar.2022	4.4
Pet services including veterinary ⁴	0.561	10.2	0.053	0.97	S-Mar.2023	8.6
Pet services ^{4, 5}		5.6		1.28	S-Jul.2022	5.6
Veterinarian services ^{4, 5}		11.0		1.62	L-Nov.2022	11.0
Photographers and photo processing ⁴	0.039	4.4	0.002	2.07	S-Nov.2022	4.4

See footnotes at end of table.

Table 7. Consumer Price Index for All Urban Consumers (CPI-U): U.S. city average, by expenditure category, May 2023, 12-month analysis table — Continued
 [1982-84=100, unless otherwise noted]

Expenditure category	Relative importance Apr. 2023	Twelve Month				
		Unadjusted percent change May 2022- May 2023	Unadjusted effect on All Items May 2022- May 2023 ¹	Standard error, median price change ²	Largest (L) or Smallest (S) unadjusted change since: ³	
					Date	Percent change
Other recreation services ⁴	1.515	5.5	0.078	0.79	S-Mar.2023	5.3
Club membership for shopping clubs, fraternal, or other organizations, or participant sports fees ⁴	0.668	4.3	0.028	0.64	S-Sep.2022	4.1
Admissions.....	0.424	4.6	0.021	1.82	S-Nov.2022	3.7
Admission to movies, theaters, and concerts ^{4, 5}		6.6		1.37	S-Mar.2023	6.5
Admission to sporting events ^{4, 5}		0.6		7.63	S-Jan.2023	0.3
Fees for lessons or instructions ⁸	0.190	12.2	0.021	1.10	L-EVER	—
Education and communication services ¹⁰	4.841	2.8	0.145	0.18	S-Jan.2023	2.8
Tuition, other school fees, and childcare.....	2.142	3.6	0.087	0.28	S-Feb.2023	3.4
College tuition and fees.....	1.170	2.3	0.033	0.41	—	—
Elementary and high school tuition and fees.....	0.301	3.6	0.011	0.34	S-Nov.2022	3.5
Day care and preschool ¹¹	0.569	6.4	0.038	0.54	S-Feb.2023	5.7
Technical and business school tuition and fees ⁴ ...	0.026	2.2	0.001	1.19	S-Feb.2023	2.1
Postage and delivery services ⁴	0.074	6.3	0.005	0.66	S-Dec.2022	4.6
Postage.....	0.063	6.7	0.005	0.70	—	—
Delivery services ⁴	0.011	3.1	0.000	1.53	S-Jan.2021	2.5
Telephone services ⁴	1.647	1.4	0.026	0.17	S-Oct.2022	-0.6
Wireless telephone services ⁴	1.403	0.6	0.010	0.17	S-Oct.2022	-1.4
Residential telephone services ¹⁰	0.244	5.8	0.016	0.91	S-Jan.2023	5.7
Internet services and electronic information providers ⁴	0.972	2.9	0.028	0.58	S-Feb.2023	2.9
Other personal services ¹⁰	1.455	6.7	0.093	0.51	L-Jun.2022	6.7
Personal care services.....	0.602	4.9	0.027	0.87	S-Feb.2023	4.8
Haircuts and other personal care services ⁴	0.602	4.9	0.027	0.87	S-Feb.2023	4.8
Miscellaneous personal services.....	0.854	8.0	0.066	0.55	L-Apr.1987	8.3
Legal services ⁹	0.247	7.3	0.017	0.86	L-Sep.2022	7.4
Funeral expenses ⁹	0.168	5.3	0.008	0.46	L-Dec.2008	5.4
Laundry and dry cleaning services ⁴	0.142	7.3	0.011	1.28	L-Nov.2022	7.9
Apparel services other than laundry and dry cleaning ⁴	0.027	14.3	0.003	1.84	L-EVER	—
Financial services ⁹	0.190	10.9	0.019	1.18	L-EVER	—
Checking account and other bank services ^{4, 5} ...		0.1		1.96	—	—
Tax return preparation and other accounting fees ^{4, 5}				1.61	—	—
Special aggregate indexes						
All items less food.....	86.564	3.6	3.155	0.14	S-Mar.2021	2.5
All items less shelter.....	65.436	2.1	1.414	0.13	S-Feb.2021	1.8
All items less food and shelter.....	51.999	1.0	0.521	0.15	S-Jan.2021	0.6
All items less food, shelter, and energy.....	45.021	3.4	1.541	0.15	S-Mar.2021	1.6
All items less food, shelter, energy, and used cars and trucks.....	42.348	4.2	1.759	0.16	S-Nov.2021	4.1
All items less medical care.....	92.122	4.3	3.987	0.13	S-Mar.2021	2.7
All items less energy.....	93.022	5.5	5.067	0.12	S-Nov.2021	5.1
Commodities.....	38.515	0.6	0.255	0.14	S-Nov.2020	0.2
Commodities less food, energy, and used cars and trucks.....	18.674	3.7	0.665	0.26	S-Jul.2021	3.6
Commodities less food.....	25.079	-2.4	-0.638	0.19	S-Jul.2020	-3.8
Commodities less food and beverages.....	24.243	-2.7	-0.679	0.20	S-Jul.2020	-4.0
Services.....	61.485	6.3	3.793	0.18	S-Jul.2022	6.2
Services less rent of shelter ¹⁵	27.290	4.2	1.165	0.21	S-Dec.2021	3.8
Services less medical care services.....	55.062	7.1	3.797	0.19	S-Aug.2022	7.0
Durables.....	12.547	0.0	0.001	0.30	L-Nov.2022	2.4

See footnotes at end of table.

Table 7. Consumer Price Index for All Urban Consumers (CPI-U): U.S. city average, by expenditure category, May 2023, 12-month analysis table — Continued
 [1982-84=100, unless otherwise noted]

Expenditure category	Relative importance Apr. 2023	Twelve Month				
		Unadjusted percent change May 2022- May 2023	Unadjusted effect on All Items May 2022- May 2023 ¹	Standard error, median price change ²	Largest (L) or Smallest (S) unadjusted change since: ³	
					Date	Percent change
Nondurables.....	25.968	1.0	0.253	0.16	S-Jan.2021	0.7
Nondurables less food.....	12.532	-4.6	-0.639	0.26	S-Dec.2020	-4.8
Nondurables less food and beverages.....	11.696	-5.2	-0.680	0.28	S-Dec.2020	-5.4
Nondurables less food, beverages, and apparel.....	9.130	-7.3	-0.771	0.32	S-Nov.2020	-7.3
Nondurables less food and apparel.....	9.966	-6.4	-0.730	0.28	S-Jul.2020	-6.8
Housing.....	44.339	6.8	2.892	0.22	S-Apr.2022	6.5
Education and communication ⁴	5.739	1.5	0.089	0.28	S-Mar.2023	1.4
Education ⁴	2.236	3.4	0.085	0.29	S-Feb.2023	3.3
Communication ⁴	3.503	0.1	0.003	0.41	—	—
Information and information processing ⁴	3.430	0.0	-0.002	0.41	—	—
Information technology, hardware and services ¹⁷	1.783	-1.8	-0.028	0.81	L-Jun.2022	-1.2
Recreation ⁴	5.395	4.5	0.236	0.38	S-Oct.2022	4.1
Video and audio ⁴	1.283	2.7	0.033	0.59	S-Feb.2023	2.5
Pets, pet products and services ⁴	1.237	10.3	0.116	0.70	S-Mar.2023	9.4
Photography ⁴	0.061	4.7	0.003	1.76	S-Nov.2022	3.9
Food and beverages.....	14.272	6.6	0.933	0.19	S-Dec.2021	6.0
Domestically produced farm food.....	7.213	5.7	0.402	0.30	S-Oct.2021	5.4
Other services.....	9.417	4.3	0.417	0.20	S-Feb.2023	4.3
Apparel less footwear.....	2.058	4.4	0.092	1.00	—	—
Fuels and utilities.....	4.490	0.9	0.051	0.62	S-Aug.2020	0.2
Household energy.....	3.432	-0.5	-0.010	0.80	S-Aug.2020	-0.9
Medical care.....	7.878	0.7	0.061	0.34	S-Sep.2021	0.4
Transportation.....	17.112	-2.0	-0.432	0.30	S-Dec.2020	-2.4
Private transportation.....	16.290	-1.6	-0.332	0.29	S-Mar.2023	-1.6
New and used motor vehicles ⁴	8.073	1.4	0.105	0.35	L-Nov.2022	3.6
Utilities and public transportation.....	7.662	1.1	0.091	0.41	S-Feb.2021	0.8
Household furnishings and operations.....	5.285	4.2	0.207	0.49	S-Aug.2021	4.0
Other goods and services.....	2.698	6.7	0.178	0.33	L-Nov.2022	7.0
Personal care.....	2.203	6.8	0.146	0.36	L-Nov.2022	7.2

¹ The 'effect' of an item category is a measure of that item's contribution to the All items price change. For example, if the Food index had an effect of 0.40, and the All items index rose 1.2 percent, then the increase in food prices contributed 0.40 / 1.2, or 33.3 percent, to that All items increase. Said another way, had food prices been unchanged for that year the change in the All items index would have been 1.2 percent minus 0.40, or 0.8 percent. Effects can be negative as well. For example, if the effect of food was a negative 0.1, and the All items index rose 0.5 percent, the All items index actually would have been 0.1 percent higher (or 0.6 percent) had food prices been unchanged. Since food prices fell while prices overall were rising, the contribution of food to the All items price change was negative (in this case, -0.1 / 0.5, or minus 20 percent).

² A statistic's margin of error is often expressed as its point estimate plus or minus two standard errors. For example, if a CPI category rose 2.6 percent, and its standard error was 0.25 percent, the margin of error on this item's 12-month percent change would be 2.6 percent, plus or minus 0.5 percent.

³ If the current 12-month percent change is greater than the previous published 12-month percent change, then this column identifies the closest prior month with a 12-month percent change as (L)arge as or (L)arger than the current 12-month change. If the current 12-month percent change is smaller than the previous published 12-month percent change, the most recent month with a change as (S)mall or (S)maller than the current month change is identified. If the current and previous published 12-month percent changes are equal, a dash will appear. Standard numerical comparison is used. For example, 2.0% is greater than 0.6%, -4.4% is less than -2.0%, and -2.0% is less than 0.0%. Note that a (L)arger change can be a smaller decline, for example, a -0.2% change is larger than a -0.4% change, but still represents a decline in the price index. Likewise, (S)maller changes can be increases, for example, a 0.6% change is smaller than 0.8%, but still represents an increase in the price index. In this context, a -0.2% change is considered to be smaller than a 0.0% change.

⁴ Indexes on a December 1997=100 base.

⁵ Special indexes based on a substantially smaller sample. These series do not contribute to the all items index aggregation and therefore do not have a relative importance or effect.

⁶ Indexes on a December 2007=100 base.

⁷ Indexes on a December 2005=100 base.

⁸ Indexes on a December 1986=100 base.

⁹ Indexes on a December 1993=100 base.

¹⁰ Indexes on a December 2009=100 base.

¹¹ Indexes on a December 1990=100 base.

¹² Indexes on a December 1983=100 base.

¹³ Indexes on a December 2001=100 base.

¹⁴ Indexes on a December 2019=100 base.

¹⁵ Indexes on a December 1982=100 base.

¹⁶ Indexes on a December 1996=100 base.

¹⁷ Indexes on a December 1988=100 base.